

Product datasheet for **TA346323**

MMP3 Rabbit Polyclonal Antibody

Product data:

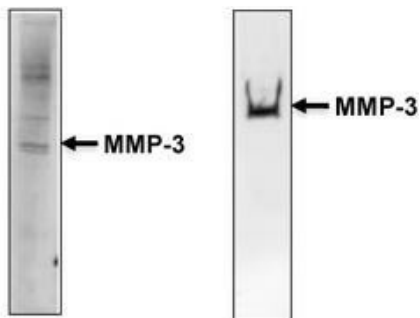
Product Type:	Primary Antibodies
Applications:	IHC, WB
Recommended Dilution:	WB, IHC
Reactivity:	Human
Host:	Rabbit
Isotype:	IgG
Clonality:	Polyclonal
Immunogen:	The immunogen for anti-MMP3 antibody: synthetic peptide directed towards the middle region of human MMP3. Synthetic peptide located within the following region: SFAVREHGDFYPFDGPGNVLAHAYAPGPGINGDAHFDDDEQWTKDTTGTN
Formulation:	Liquid. Purified antibody supplied in 1x PBS buffer with 0.09% (w/v) sodium azide and 2% sucrose. <i>Note that this product is shipped as lyophilized powder to China customers.</i>
Purification:	Affinity Purified
Conjugation:	Unconjugated
Storage:	Store at -20°C as received.
Stability:	Stable for 12 months from date of receipt.
Predicted Protein Size:	43 kDa
Gene Name:	matrix metalloproteinase 3
Database Link:	NP_002413 Entrez Gene 4314 Human P08254
Background:	MMP3 can degrade fibronectin, laminin, gelatins of type I, III, IV, and V; collagens III, IV, X, and IX, and cartilage proteoglycans. MMP3 activates procollagenase.
Synonyms:	CHDS6; MMP-3; SL-1; STMY; STMY1; STR1
Note:	Immunogen Sequence Homology: Rat: 100%; Human: 100%; Mouse: 100%; Rabbit: 100%; Pig: 93%; Dog: 86%; Horse: 86%; Sheep: 79%; Bovine: 79%; Zebrafish: 79%; Guinea pig: 79%



[View online »](#)

Protein Families: Druggable Genome, Protease

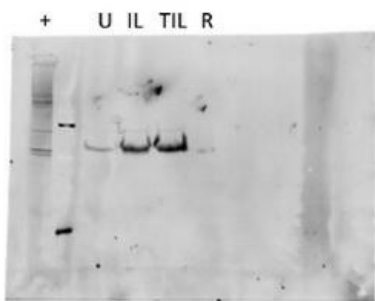
Product images:



Equine
Cartilage
Extract

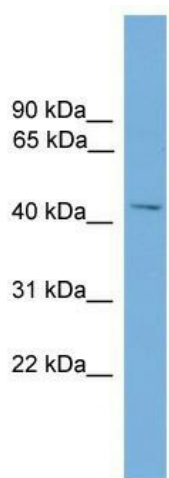
Equine
Cartilage
Secretome
(Cytokine
Stimulated)

MMP3 antibody - middle region validated by WB using Articular cartilage secretome at 1: 1000.



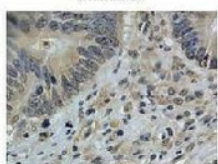
Legend
 + = Positive control (crushed IL-1 β treated equine cartilage explants)
 U = Untreated equine cartilage
 IL = IL-1 β treated equine cartilage
 TIL = TNF- α and IL-1 β treated equine cartilage
 R = Rimadyl treated equine cartilage

Sample Type: Equine Cartilage Explants
 Primary Dilution: 1: 1000
 Secondary: Abcam ab97200
 (Dilution: 1: 20, 000)

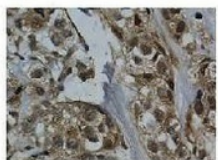


WB Suggested Anti-MMP3 Antibody Titration: 0.2-1 ug/ml; ELISA Titer: 1: 62500; Positive Control: Hela cell lysate

MMP-3



Sample: Human colorectal cancer



Control: Human Small Intestine

Brown: Primary antibody
Blue: DAPI

Application: IHC; Species+tissue/cell type: Control-Human small intestine, Sample-human colorectal cancer; Primary antibody dilution: 1: 100; Secondary antibody: Biotinylated pig anti-rabbit+streptavidin-HRP