

Product datasheet for **TA346322**

LAIR2 Rabbit Polyclonal Antibody

Product data:

Product Type:	Primary Antibodies
Applications:	WB
Recommended Dilution:	WB
Reactivity:	Human
Host:	Rabbit
Isotype:	IgG
Clonality:	Polyclonal
Immunogen:	The immunogen for anti-LAIR2 antibody: synthetic peptide directed towards the N terminal of human LAIR2. Synthetic peptide located within the following region: SPHLTALLGLVLCLAQTIHTQEGALPRPSISAEPGTVISPGSHVTFMCRG
Formulation:	Liquid. Purified antibody supplied in 1x PBS buffer with 0.09% (w/v) sodium azide and 2% sucrose. <i>Note that this product is shipped as lyophilized powder to China customers.</i>
Purification:	Affinity Purified
Conjugation:	Unconjugated
Storage:	Store at -20°C as received.
Stability:	Stable for 12 months from date of receipt.
Predicted Protein Size:	16 kDa
Gene Name:	leukocyte associated immunoglobulin like receptor 2
Database Link:	NP_002279 Entrez Gene 3904 Human Q6ISS4



[View online »](#)

Background:

LAIR2 is a member of the immunoglobulin superfamily. It was identified by its similarity to LAIR1, an inhibitory receptor present on mononuclear leukocytes. This gene maps to a region of 19q13.4, termed the leukocyte receptor cluster, which contains 29 genes in the immunoglobulin superfamily, including LAIR1. The function of this protein is unknown, although it is thought to be secreted and may help modulate mucosal tolerance. Two transcript variants encoding different isoforms have been found for this gene. The protein encoded by this gene is a member of the immunoglobulin superfamily. It was identified by its similarity to LAIR1, an inhibitory receptor present on mononuclear leukocytes. This gene maps to a region of 19q13.4, termed the leukocyte receptor cluster, which contains 29 genes in the immunoglobulin superfamily, including LAIR1. The function of this protein is unknown, although it is thought to be secreted and may help modulate mucosal tolerance. Two transcript variants encoding different isoforms have been found for this gene.

Synonyms:

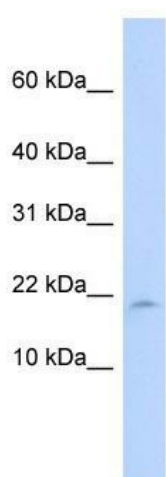
CD306

Note:

Immunogen Sequence Homology: Human: 100%

Protein Families:

Secreted Protein

Product images:

WB Suggested Anti-LAIR2 Antibody Titration: 0.2-1 ug/ml; ELISA Titer: 1: 312500; Positive Control: MCF7 cell lysate