

## Product datasheet for **TA346320**

### KRT13 Rabbit Polyclonal Antibody

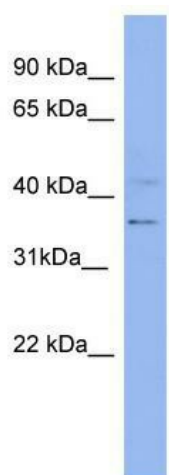
#### Product data:

|                         |   |
|-------------------------|---|
| Product Type:           | Primary Antibodies  |
| Applications:           | WB  |
| Recommended Dilution:   | WB  |
| Reactivity:             | Human   |
| Host:                   | Rabbit  |
| Isotype:                | IgG   |
| Clonality:              | Polyclonal  |
| Immunogen:              | The immunogen for anti-KRT13 antibody: synthetic peptide directed towards the N terminal of human KRT13. Synthetic peptide located within the following region:<br>TMQNLNDRLASYLEKVRALEEANADLEVKIRDWHLKQSPASPERDYSPPY   |
| Formulation:            | Liquid. Purified antibody supplied in 1x PBS buffer with 0.09% (w/v) sodium azide and 2% sucrose.<br><i>Note that this product is shipped as lyophilized powder to China customers.</i>   |
| Purification:           | Affinity Purified   |
| Conjugation:            | Unconjugated  |
| Storage:                | Store at -20°C as received.   |
| Stability:              | Stable for 12 months from date of receipt.  |
| Predicted Protein Size: | 46 kDa  |
| Gene Name:              | keratin 13  |
| Database Link:          | <a href="#">NP_002265</a><br><a href="#">Entrez Gene 3860 Human P13646</a>  |
| Background:             | KRT13 is a member of the keratin gene family. The keratins are intermediate filament proteins responsible for the structural integrity of epithelial cells and are subdivided into cytokeratins and hair keratins. Most of the type I cytokeratins consist of a |
| Synonyms:               | CK13; K13; WSN2   |
| Note:                   | Immunogen Sequence Homology: Horse: 100%; Human: 100%; Dog: 93%; Pig: 93%; Mouse: 93%; Rat: 92%; Sheep: 92%; Bovine: 92%; Rabbit: 86%   |



[View online »](#)

## Product images:



WB Suggested Anti-KRT13 Antibody Titration: 0.2-1 ug/ml; ELISA Titer: 1: 62500; Positive Control: NCI-H226 cell lysate