

## Product datasheet for **TA346318**

### Glutathione Peroxidase 2 (GPX2) Rabbit Polyclonal Antibody

#### Product data:

Product Type:	Primary Antibodies
Applications:	WB
Recommended Dilution:	WB
Reactivity:	Human
Host:	Rabbit
Isotype:	IgG
Clonality:	Polyclonal
Immunogen:	The immunogen for anti-GPX2 antibody: synthetic peptide directed towards the middle region of human GPX2. Synthetic peptide located within the following region: GGGYQPTFTLVQKCEVNGQNEHPVFAYLKDKLPYPYDDPFSLMTDPKLI
Formulation:	Liquid. Purified antibody supplied in 1x PBS buffer with 0.09% (w/v) sodium azide and 2% sucrose.
Purification:	Affinity Purified
Conjugation:	Unconjugated
Storage:	Store at -20°C as received.
Stability:	Stable for 12 months from date of receipt.
Predicted Protein Size:	22 kDa
Gene Name:	glutathione peroxidase 2
Database Link:	<a href="#">NP_002074</a> <a href="#">Entrez Gene 2877 Human</a> <a href="#">P18283</a>
Background:	This gene is a member of the glutathione peroxidase family and encodes a selenium-dependent glutathione peroxidase that is one of two isoenzymes responsible for the majority of the glutathione-dependent hydrogen peroxide-reducing activity in the epithelium of the gastrointestinal tract. Studies in knockout mice indicate that mRNA expression levels respond to luminal microflora, suggesting a role of the ileal glutathione peroxidases in preventing inflammation in the GI tract.
Synonyms:	GI-GPx; GPRP; GPRP-2; GPx-2; GPx-GI; GSHPx-2; GSHPX-GI



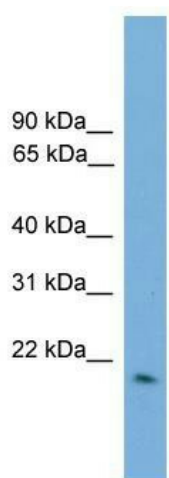
[View online »](#)

**Note:** Immunogen Sequence Homology: Pig: 100%; Rat: 100%; Human: 100%; Mouse: 100%; Bovine: 100%; Dog: 93%; Zebrafish: 91%

**Protein Families:** Druggable Genome

**Protein Pathways:** Arachidonic acid metabolism, Glutathione metabolism

**Product images:**



WB Suggested Anti-GPX2 Antibody Titration: 0.2-1 ug/ml; ELISA Titer: 1: 62500; Positive Control: HepG2 cell lysate. GPX2 is supported by BioGPS gene expression data to be expressed in HepG2