

Product datasheet for **TA346314**

Fibulin 1 (FBLN1) Rabbit Polyclonal Antibody

Product data:

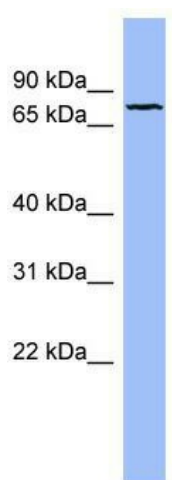
| | |
|-------------------------|---|
| Product Type: | Primary Antibodies |
| Applications: | WB |
| Recommended Dilution: | WB |
| Reactivity: | Human |
| Host: | Rabbit |
| Isotype: | IgG |
| Clonality: | Polyclonal |
| Immunogen: | The immunogen for anti-FBLN1 antibody: synthetic peptide directed towards the N terminal of human FBLN1. Synthetic peptide located within the following region: CCVKSQETGDLVDVGGGLQETDKIIEVEEQEDPYLNDRRCRGGGPKQQCRD |
| Formulation: | Liquid. Purified antibody supplied in 1x PBS buffer with 0.09% (w/v) sodium azide and 2% sucrose. <i>Note that this product is shipped as lyophilized powder to China customers.</i> |
| Purification: | Affinity Purified |
| Conjugation: | Unconjugated |
| Storage: | Store at -20°C as received. |
| Stability: | Stable for 12 months from date of receipt. |
| Predicted Protein Size: | 72 kDa |
| Gene Name: | fibulin 1 |
| Database Link: | NP_001987 Entrez Gene 2192 Human P23142 |
| Background: | Fibulin 1 is a secreted glycoprotein that becomes incorporated into a fibrillar extracellular matrix. Calcium-binding is apparently required to mediate its binding to laminin and nidogen. It mediates platelet adhesion via binding fibrinogen. Four splice v |
| Synonyms: | FBLN; FIBL1 |
| Note: | Immunogen Sequence Homology: Pig: 100%; Rat: 100%; Human: 100%; Guinea pig: 100%; Dog: 93%; Horse: 93%; Bovine: 93%; Mouse: 92%; Yeast: 83% |



[View online »](#)

Protein Families: Secreted Protein

Product images:



WB Suggested Anti-FBLN1 Antibody Titration: 0.2-1 ug/ml; ELISA Titer: 1: 62500; Positive Control: OVCAR-3 cell lysate