

## Product datasheet for **TA346311**

### Pyruvate Dehydrogenase E2 (DLAT) Rabbit Polyclonal Antibody

#### Product data:

Product Type:	Primary Antibodies
Applications:	IHC, WB
Recommended Dilution:	WB, IHC
Reactivity:	Human
Host:	Rabbit
Isotype:	IgG
Clonality:	Polyclonal
Immunogen:	The immunogen for anti-DLAT antibody: synthetic peptide directed towards the N terminal of human DLAT. Synthetic peptide located within the following region: WTPSSGATPRNRLLLQLLGSPGRRYSLPPHQKVPLPSLSPTMQAGTIAR
Formulation:	Liquid. Purified antibody supplied in 1x PBS buffer with 0.09% (w/v) sodium azide and 2% sucrose. <i>Note that this product is shipped as lyophilized powder to China customers.</i>
Purification:	Protein A purified
Conjugation:	Unconjugated
Storage:	Store at -20°C as received.
Stability:	Stable for 12 months from date of receipt.
Predicted Protein Size:	69 kDa
Gene Name:	dihydrolipoamide S-acetyltransferase
Database Link:	<a href="#">NP_001922</a> <a href="#">Entrez Gene 1737 Human P10515</a>
Background:	DLAT is dihydrolipoamide acetyltransferase, the E2 subunit of the mammalian pyruvate dehydrogenase complex of the inner mitochondrial membrane. Patients with primary biliary cirrhosis show autoantibodies to DLAT. The DLAT gene encodes dihydrolipoamide acetyltransferase (EC 2.3.1.12), the E2 subunit of the mammalian pyruvate dehydrogenase complex (PDC; EC 1.2.4.1) of the inner mitochondrial membrane. Patients with primary biliary cirrhosis (PBC; MIM 109720) show autoantibodies to DLAT. [supplied by OMIM]



[View online »](#)

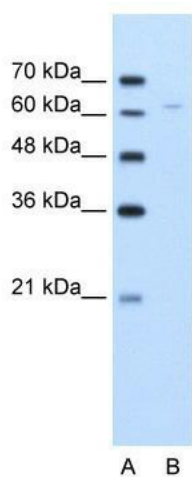
**Synonyms:** DLTA; PDC-E2; PDCE2

**Note:** Immunogen Sequence Homology: Dog: 100%; Pig: 100%; Rat: 100%; Horse: 100%; Human: 100%; Mouse: 100%; Bovine: 100%; Rabbit: 100%; Guinea pig: 100%; Zebrafish: 86%

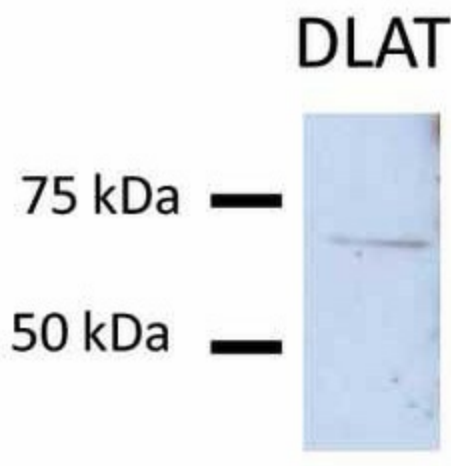
**Protein Families:** Druggable Genome

**Protein Pathways:** Citrate cycle (TCA cycle), Glycolysis / Gluconeogenesis, Metabolic pathways, Pyruvate metabolism

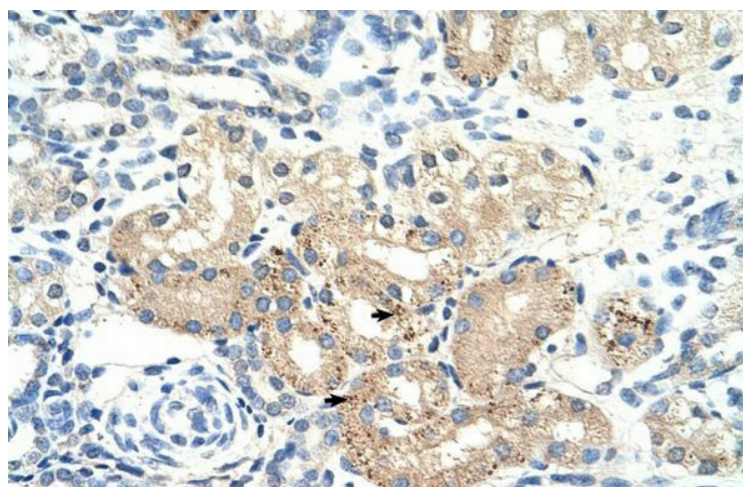
**Product images:**



WB Suggested Anti-DLAT Antibody Titration: 5.0 ug/ml; Positive Control: Jurkat cell lysate



Sample Type: Huh7 lysate (50ug); Primary Antibody Dilution: 1: 200;



Rabbit Anti-DLAT Antibody; Paraffin Embedded Tissue: Human Kidney; Cellular Data: Epithelial cells of renal tubule; Antibody Concentration: 4.0-8.0 ug/ml; Magnification: 400X