

## Product datasheet for **TA346310**

### CYB561 Rabbit Polyclonal Antibody

#### Product data:

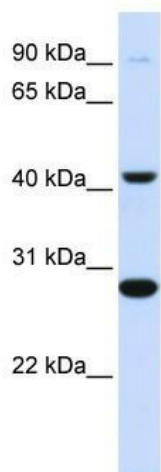
Product Type:	Primary Antibodies
Applications:	WB
Recommended Dilution:	WB
Reactivity:	Human
Host:	Rabbit
Isotype:	IgG
Clonality:	Polyclonal
Immunogen:	The immunogen for anti-CYB561 antibody: synthetic peptide directed towards the middle region of human CYB561. Synthetic peptide located within the following region: LFGASFSLRSRYRPQHIFFGATIFLLSVGTALLGLKEALLFNLGGKYS
Formulation:	Liquid. Purified antibody supplied in 1x PBS buffer with 0.09% (w/v) sodium azide and 2% sucrose.
Purification:	Affinity Purified
Conjugation:	Unconjugated
Storage:	Store at -20°C as received.
Stability:	Stable for 12 months from date of receipt.
Predicted Protein Size:	27 kDa
Gene Name:	cytochrome b561
Database Link:	<a href="#">NP_001906</a> <a href="#">Entrez Gene 1534 Human</a> <a href="#">P49447</a>
Background:	CYB561 is a senescence-associated protein in normal human oral keratinocytes. Western blots using two different antibodies against two unique regions of this protein target confirm the same apparent molecular weight in our tests.
Synonyms:	CYB561A1; FRRS2
Note:	Immunogen Sequence Homology: Dog: 100%; Pig: 100%; Rat: 100%; Horse: 100%; Human: 100%; Mouse: 100%; Sheep: 100%; Bovine: 100%; Rabbit: 100%; Guinea pig: 100%



[View online »](#)

Protein Families: Transmembrane

### Product images:



WB Suggested Anti-CYB561 Antibody Titration:  
0.2-1 ug/ml; ELISA Titer: 1: 12500; Positive  
Control: Human Muscle