

Product datasheet for **TA346309**

CYB561 Rabbit Polyclonal Antibody

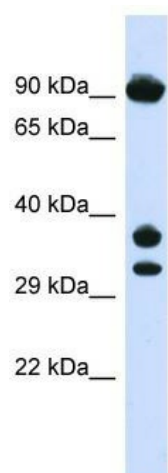
Product data:

Product Type:	Primary Antibodies
Applications:	WB
Recommended Dilution:	WB
Reactivity:	Human
Host:	Rabbit
Isotype:	IgG
Clonality:	Polyclonal
Immunogen:	The immunogen for Anti-CYB561 antibody is: synthetic peptide directed towards the N-terminal region of Human CYB561. Synthetic peptide located within the following region: GAWLGLYRGGIAWESDLQFNAPLCMVIGLIFLQGNALLVYRVFRNEAKR
Formulation:	Liquid. Purified antibody supplied in 1x PBS buffer with 0.09% (w/v) sodium azide and 2% sucrose.
Purification:	Affinity Purified
Conjugation:	Unconjugated
Storage:	Store at -20°C as received.
Stability:	Stable for 12 months from date of receipt.
Predicted Protein Size:	34 kDa
Gene Name:	cytochrome b561
Database Link:	NP_001017916 Entrez Gene 1534 Human P49447
Background:	The function of this protein remains unknown.
Synonyms:	CYB561A1; FRRS2
Note:	Immunogen Sequence Homology: Human: 100%; Pig: 86%; Rat: 86%; Horse: 86%; Mouse: 86%; Sheep: 86%; Bovine: 86%; Rabbit: 86%; Guinea pig: 86%; Dog: 79%
Protein Families:	Transmembrane



[View online »](#)

Product images:



Host: Rabbit; Target Name: CYB561; Sample
Tissue: 293T Whole cell lysates; Antibody Dilution:
1.0 ug/ml