

Product datasheet for **TA346306**

CRABP2 Rabbit Polyclonal Antibody

Product data:

Product Type:	Primary Antibodies
Applications:	WB
Recommended Dilution:	WB
Reactivity:	Human
Host:	Rabbit
Isotype:	IgG
Clonality:	Polyclonal
Immunogen:	The immunogen for anti-CRABP2 antibody: synthetic peptide directed towards the middle region of human CRABP2. Synthetic peptide located within the following region: AAASKPAVEIKQEGDTFYIKTSTTVRTTEINFKVGEEFEEQTVDGRPCKS
Formulation:	Liquid. Purified antibody supplied in 1x PBS buffer with 0.09% (w/v) sodium azide and 2% sucrose. <i>Note that this product is shipped as lyophilized powder to China customers.</i>
Purification:	Affinity Purified
Conjugation:	Unconjugated
Storage:	Store at -20°C as received.
Stability:	Stable for 12 months from date of receipt.
Predicted Protein Size:	16 kDa
Gene Name:	cellular retinoic acid binding protein 2
Database Link:	NP_001869 Entrez Gene 1382 Human P29373
Background:	A number of specific carrier proteins for members of the vitamin A family have been discovered. Cellular retinoic acid binding proteins (CRABP) are low molecular weight proteins whose precise function remains unknown. The inducibility of the CRABP2 gene suggests that this isoform is important in retinoic acid-mediated regulation of human skin growth and differentiation. It has been postulated that the CRABP2 gene is transcriptionally regulated by a newly synthesized regulatory protein.



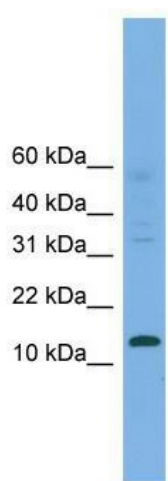
[View online »](#)

Synonyms: CRABP-II; RBP6

Note: Immunogen Sequence Homology: Dog: 100%; Pig: 100%; Rat: 100%; Horse: 100%; Human: 100%; Bovine: 100%; Guinea pig: 100%; Mouse: 93%; Rabbit: 86%; Goat: 85%; Zebrafish: 77%

Protein Families: Druggable Genome, Transcription Factors

Product images:



WB Suggested Anti-CRABP2 Antibody Titration: 0.2-1 ug/ml; ELISA Titer: 1: 1562500; Positive Control: PANC1 cell lysate. CRABP2 is supported by BioGPS gene expression data to be expressed in PANC1