

Product datasheet for **TA346305**

Cpa3 Rabbit Polyclonal Antibody

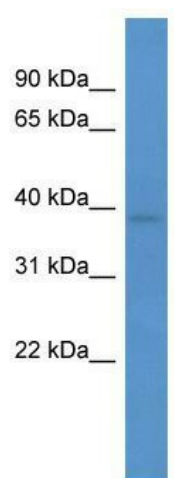
Product data:

Product Type:	Primary Antibodies
Applications:	WB
Recommended Dilution:	WB
Reactivity:	Mouse
Host:	Rabbit
Isotype:	IgG
Clonality:	Polyclonal
Immunogen:	The immunogen for anti-Cpa3 antibody: synthetic peptide corresponding to a region of Mouse. Synthetic peptide located within the following region: ILIHDLQEEIEKQFDVKDEIAGRHSYAKYNDWDKIVSWTEKMLEKHPEMW
Formulation:	Liquid. Purified antibody supplied in 1x PBS buffer with 0.09% (w/v) sodium azide and 2% sucrose. <i>Note that this product is shipped as lyophilized powder to China customers.</i>
Purification:	Affinity Purified
Conjugation:	Unconjugated
Storage:	Store at -20°C as received.
Stability:	Stable for 12 months from date of receipt.
Predicted Protein Size:	36 kDa
Gene Name:	carboxypeptidase A3, mast cell
Database Link:	NP_031779 Entrez Gene 12873 Mouse P15089
Background:	The function of Cpa3 remains unknown.
Synonyms:	MC-CPA
Note:	Immunogen Sequence Homology: Dog: 100%; Human: 100%; Rat: 93%; Mouse: 93%; Yeast: 90%; Pig: 86%; Bovine: 86%; Guinea pig: 86%



[View online »](#)

Product images:



WB Suggested Anti-Cpa3 Antibody Titration: 0.2-1 ug/ml; ELISA Titer: 1: 62500; Positive Control: Mouse Kidney