

Product datasheet for **TA346304**

BDNF Rabbit Polyclonal Antibody

Product data:

| | |
|-------------------------|--|
| Product Type: | Primary Antibodies |
| Applications: | IHC, WB |
| Recommended Dilution: | IHC, WB |
| Reactivity: | Mouse, Human, Macaque |
| Host: | Rabbit |
| Isotype: | IgG |
| Clonality: | Polyclonal |
| Immunogen: | The immunogen for anti-BDNF antibody: synthetic peptide directed towards the middle region of human BDNF. Synthetic peptide located within the following region: EWVTAADKKTAVDMSGGTVTVLEKVPVSKGQLKQYFYETKCNPMGYTKEG |
| Formulation: | Liquid. Purified antibody supplied in 1x PBS buffer with 0.09% (w/v) sodium azide and 2% sucrose. <i>Note that this product is shipped as lyophilized powder to China customers.</i> |
| Purification: | Affinity Purified |
| Conjugation: | Unconjugated |
| Storage: | Store at -20°C as received. |
| Stability: | Stable for 12 months from date of receipt. |
| Predicted Protein Size: | 27 kDa |
| Gene Name: | brain-derived neurotrophic factor |
| Database Link: | NP_001700 Entrez Gene 12064 Mouse Entrez Gene 627 Human P23560 |



[View online »](#)

Background: BDNF is a member of the nerve growth factor family. It is induced by cortical neurons, and is necessary for survival of striatal neurons in the brain. Expression BDNF is reduced in both Alzheimer's and Huntington disease patients. BDNF may play a role in the regulation of stress response and in the biology of mood disorders. The protein encoded by this gene is a member of the nerve growth factor family. It is induced by cortical neurons, and is necessary for survival of striatal neurons in the brain. Expression of this gene is reduced in both Alzheimer's and Huntington disease patients. This gene may play a role in the regulation of stress response and in the biology of mood disorders. Multiple transcript variants encoding distinct isoforms have been described for this gene, but the full-length nature of only some could be determined.

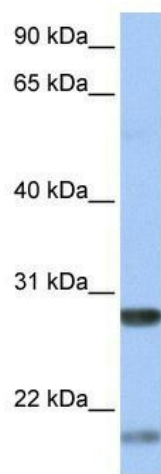
Synonyms: ANON2; BULN2

Note: Immunogen Sequence Homology: Dog: 100%; Pig: 100%; Rat: 100%; Horse: 100%; Human: 100%; Mouse: 100%; Rabbit: 100%

Protein Families: Adult stem cells, Druggable Genome, Embryonic stem cells, ES Cell Differentiation/IPS, Induced pluripotent stem cells, Secreted Protein, Transmembrane

Protein Pathways: Huntington's disease, MAPK signaling pathway, Neurotrophin signaling pathway

Product images:

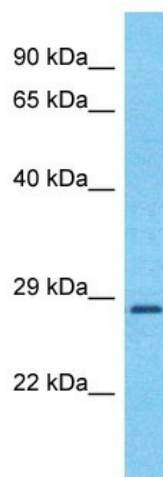


WB Suggested Anti-BDNF Antibody Titration: 0.2-1 ug/ml; Positive Control: Human Liver



Host: Rabbit
 Target Name: BDNF
 Sample Tissue: ACHN Cell Lysate
 Antibody Dilution: 1.0µg/ml

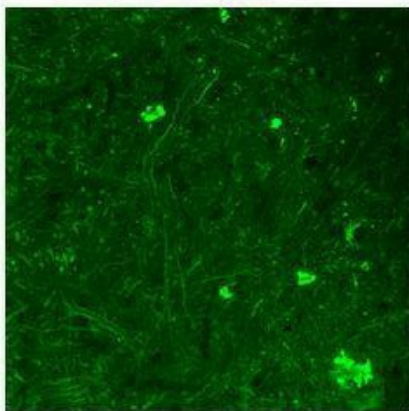
Host: Rabbit; Target Name: BDNF; Sample Tissue: ACHN Whole Cell lysates; Antibody Dilution: 1.0 ug/ml



Host: Rabbit
 Target Name: BDNF
 Sample Tissue: Fetal Liver Lysate
 Antibody Dilution: 0.5µg/ml

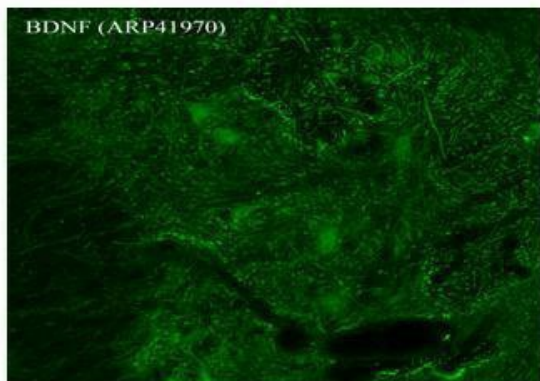
Host: Rabbit; Target Name: BDNF; Sample Tissue: Fetal Liver lysates; Antibody Dilution: 0.5 ug/ml

BDNF



Green:BDNF

Sample Type: Rhesus macaque spinal cord
 Primary Antibody Dilution: 1: 300; Secondary Antibody: Donkey anti Rabbit 488; Secondary Antibody: ilution: 1: 500; Color/Signal Descriptions: Green: BDNF; Gene Name: BDNF;

BDNF**Green: BDNF**

Sample Type: Ventral horn region of mouse spinal cord
Primary Antibody Dilution: 1: 200;
Secondary Antibody: Donkey anti-rabbit CY2;
Secondary Antibody: ilution: 1: 500; Color/Signal Descriptions: Green: BDNF; Gene Name: BDNF;