

Product datasheet for **TA346303**

BDNF Rabbit Polyclonal Antibody

Product data:

Product Type:	Primary Antibodies
Applications:	WB
Recommended Dilution:	WB
Reactivity:	Human
Host:	Rabbit
Isotype:	IgG
Clonality:	Polyclonal
Immunogen:	The immunogen for Anti-BDNF antibody is: synthetic peptide directed towards the N-terminal region of Human BDNF. Synthetic peptide located within the following region: EELLDEDQKVRPNEENNKDADLYTSRVMLSSQVPLEPPLLFLLEEKNYL
Formulation:	Liquid. Purified antibody supplied in 1x PBS buffer with 0.09% (w/v) sodium azide and 2% sucrose. <i>Note that this product is shipped as lyophilized powder to China customers.</i>
Purification:	Affinity Purified
Conjugation:	Unconjugated
Storage:	Store at -20°C as received.
Stability:	Stable for 12 months from date of receipt.
Predicted Protein Size:	36 kDa
Gene Name:	brain-derived neurotrophic factor
Database Link:	NP_001137277 Entrez Gene 627 Human P23560
Background:	The protein encoded by this gene is a member of the nerve growth factor family. It is induced by cortical neurons, and is necessary for survival of striatal neurons in the brain. Expression of this gene is reduced in both Alzheimer's and Huntington disease patients. This gene may play a role in the regulation of stress response and in the biology of mood disorders. Multiple transcript variants encoding distinct isoforms have been described for this gene.
Synonyms:	ANON2; BULN2



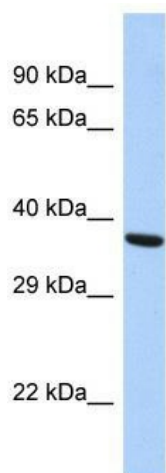
[View online »](#)

Note: Immunogen Sequence Homology: Dog: 100%; Pig: 100%; Rat: 100%; Human: 100%; Mouse: 100%; Rabbit: 100%; Zebrafish: 100%

Protein Families: Adult stem cells, Druggable Genome, Embryonic stem cells, ES Cell Differentiation/IPS, Induced pluripotent stem cells, Secreted Protein, Transmembrane

Protein Pathways: Huntington's disease, MAPK signaling pathway, Neurotrophin signaling pathway

Product images:



Host: Rabbit; Target Name: BDNF; Sample Tissue: HepG2 Whole cell lysates; Antibody Dilution: 1.0 ug/ml