

Product datasheet for **TA346302**

Serum Amyloid P (APCS) Rabbit Polyclonal Antibody

Product data:

Product Type:	Primary Antibodies
Applications:	IHC, WB
Recommended Dilution:	WB, IHC
Reactivity:	Human
Host:	Rabbit
Isotype:	IgG
Clonality:	Polyclonal
Immunogen:	The immunogen for anti-APCS antibody: synthetic peptide directed towards the N terminal of human APCS. Synthetic peptide located within the following region: NFTLCFRAYSDSLRAYSLFSYNTQGRDNELLVYKERVGEYSLYIGRHKVT
Formulation:	Liquid. Purified antibody supplied in 1x PBS buffer with 0.09% (w/v) sodium azide and 2% sucrose. <i>Note that this product is shipped as lyophilized powder to China customers.</i>
Purification:	Protein A purified
Conjugation:	Unconjugated
Storage:	Store at -20°C as received.
Stability:	Stable for 12 months from date of receipt.
Predicted Protein Size:	25 kDa
Gene Name:	amyloid P component, serum
Database Link:	NP_001630 Entrez Gene 325 Human P02743



[View online »](#)

Background:

APCS is a glycoprotein, belonging to the pentraxin family of proteins, which has a characteristic pentameric organization. These family members have considerable sequence homology which is thought to be the result of gene duplication. The binding of the protein to proteins in the pathological amyloid cross-beta fold suggests its possible role as a chaperone. This protein is also thought to control the degradation of chromatin. It has been demonstrated that this protein binds to apoptotic cells at an early stage, which raises the possibility that it is involved in dealing with apoptotic cells in vivo. The protein encoded by this gene is a glycoprotein, belonging to the pentraxin family of proteins, which has a characteristic pentameric organization. These family members have considerable sequence homology which is thought to be the result of gene duplication. The binding of the encoded protein to proteins in the pathological amyloid cross-beta fold suggests its possible role as a chaperone. This protein is also thought to control the degradation of chromatin. It has been demonstrated that this protein binds to apoptotic cells at an early stage, which raises the possibility that it is involved in dealing with apoptotic cells in vivo. This gene has multiple polyadenylation sites.

Synonyms:

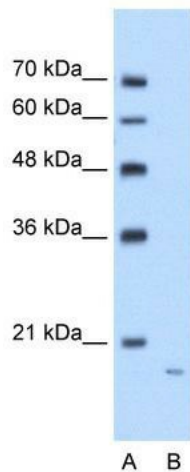
HEL-S-92n; PTX2; SAP

Note:

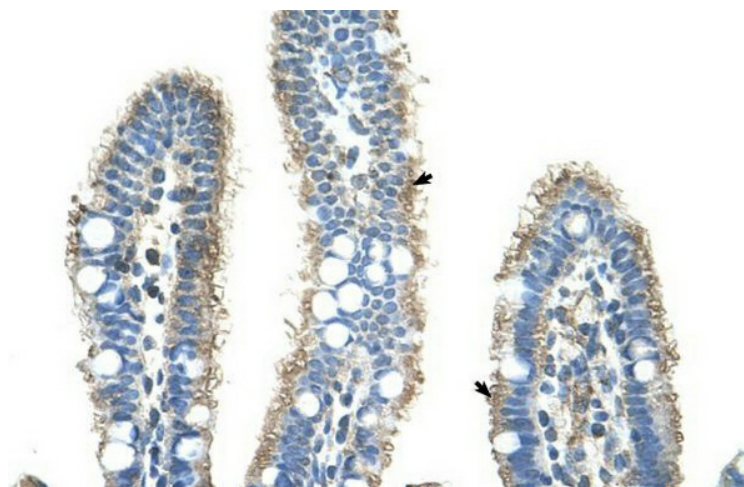
Immunogen Sequence Homology: Human: 100%; Rat: 93%; Pig: 86%; Guinea pig: 86%; Mouse: 77%

Protein Families:

Druggable Genome, Secreted Protein

Product images:

WB Suggested Anti-APCS Antibody Titration: 1.25 ug/ml; Positive Control: Jurkat cell lysate



Rabbit Anti-APCS Antibody; Paraffin Embedded Tissue: Human Intestine; Cellular Data: Epithelial cells of intestinal villas; Antibody Concentration: 4.0-8.0 ug/ml; Magnification: 400X