

Product datasheet for **TA346301**

Apof Rabbit Polyclonal Antibody

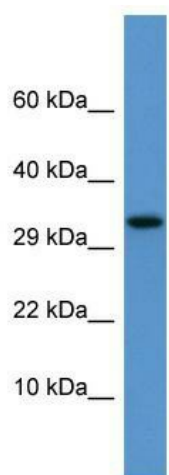
Product data:

| | |
|-------------------------|---|
| Product Type: | Primary Antibodies |
| Applications: | WB |
| Recommended Dilution: | WB |
| Reactivity: | Rat |
| Host: | Rabbit |
| Isotype: | IgG |
| Clonality: | Polyclonal |
| Immunogen: | The immunogen for anti-Apof antibody: synthetic peptide corresponding to a region of Rat. Synthetic peptide located within the following region: LLPAVGTYYNLGTALYYAIKNCTDKAKERGRDGAIDLGYDLLMTMVGMSG |
| Formulation: | Liquid. Purified antibody supplied in 1x PBS buffer with 0.09% (w/v) sodium azide and 2% sucrose. <i>Note that this product is shipped as lyophilized powder to China customers.</i> |
| Purification: | Affinity Purified |
| Conjugation: | Unconjugated |
| Storage: | Store at -20°C as received. |
| Stability: | Stable for 12 months from date of receipt. |
| Predicted Protein Size: | 34 kDa |
| Gene Name: | apolipoprotein F |
| Database Link: | NP_001019522 Entrez Gene 500761 Rat Q5M889 |
| Background: | Apof is a minor apolipoprotein that associates with LDL. Apof inhibits cholesteryl ester transfer protein (CETP) activity and appears to be an important regulator of cholesterol transport. Apof also associates to a lesser degree with VLDL, Apo-AI and Apo-AII. |
| Synonyms: | Apo-F; DKFZp781G18150; LTIP; MGC22520 |
| Note: | Immunogen Sequence Homology: Rat: 100%; Human: 100%; Mouse: 100%; Pig: 93%; Bovine: 93%; Rabbit: 93%; Horse: 86%; Guinea pig: 86% |



[View online »](#)

Product images:



WB Suggested Anti-Apof Antibody Titration: 0.2-1 ug/ml; ELISA Titer: 1: 1562500; Positive Control: Rat Kidney