

## Product datasheet for **TA346299**

### Alkaline Phosphatase (ALPP) Rabbit Polyclonal Antibody

#### Product data:

Product Type:	Primary Antibodies
Applications:	IHC, WB
Recommended Dilution:	WB, IHC
Reactivity:	Human
Host:	Rabbit
Isotype:	IgG
Clonality:	Polyclonal
Immunogen:	The immunogen for anti-ALPP antibody: synthetic peptide directed towards the C terminal of human ALPP. Synthetic peptide located within the following region: TVLLYGNPGYVLKDGARPDVTESESGSPEYRQSSAVPLDEETHAGEDVA
Formulation:	Liquid. Purified antibody supplied in 1x PBS buffer with 0.09% (w/v) sodium azide and 2% sucrose. <i>Note that this product is shipped as lyophilized powder to China customers.</i>
Purification:	Protein A purified
Conjugation:	Unconjugated
Storage:	Store at -20°C as received.
Stability:	Stable for 12 months from date of receipt.
Predicted Protein Size:	59 kDa
Gene Name:	alkaline phosphatase, placental
Database Link:	<a href="#">NP_001623</a> <a href="#">Entrez Gene 250 Human P05187</a>



[View online »](#)

**Background:**

There are at least four distinct but related alkaline phosphatases: intestinal, placental, placental-like, and liver/bone/kidney (tissue non-specific). The first three are located together on chromosome 2 while the tissue non-specific form is located on chromosome 1. ALPP is a membrane bound glycosylated enzyme, also referred to as the heat stable form, that is expressed primarily in the placenta although it is closely related to the intestinal form of the enzyme as well as to the placental-like form. There are at least four distinct but related alkaline phosphatases: intestinal, placental, placental-like, and liver/bone/kidney (tissue non-specific). The first three are located together on chromosome 2 while the tissue non-specific form is located on chromosome 1. The product of this gene is a membrane bound glycosylated enzyme, also referred to as the heat stable form, that is expressed primarily in the placenta although it is closely related to the intestinal form of the enzyme as well as to the placental-like form. The coding sequence for this form of alkaline phosphatase is unique in that the 3' untranslated region contains multiple copies of an Alu family repeat. In addition, this gene is polymorphic and three common alleles (type 1, type 2 and type 3) for this form of alkaline phosphatase have been well characterized.

**Synonyms:**

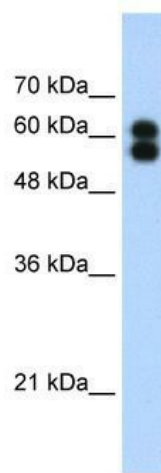
ALP; PALP; PLAP; PLAP-1

**Note:**

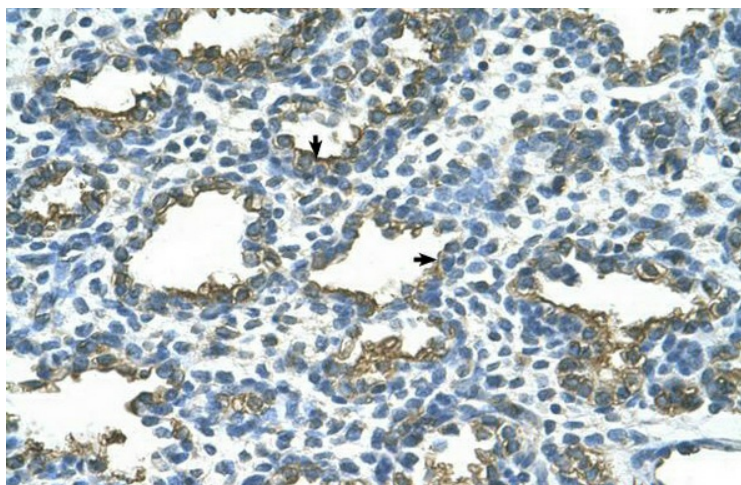
Immunogen Sequence Homology: Human: 100%; Dog: 86%; Bovine: 86%; Zebrafish: 86%; Pig: 79%; Rat: 79%; Horse: 79%; Mouse: 79%; Rabbit: 79%; Guinea pig: 79%

**Protein Pathways:**

Folate biosynthesis, Metabolic pathways

**Product images:**

WB Suggested Anti-ALPP Antibody Titration: 1.25 ug/ml; Positive Control: HepG2 cell lysate



Rabbit Anti-ALPP Antibody; Paraffin Embedded Tissue: Human Lung; Cellular Data: Alveolar cells; Antibody Concentration: 4.0-8.0 ug/ml; Magnification: 400X