

## Product datasheet for **TA346297**

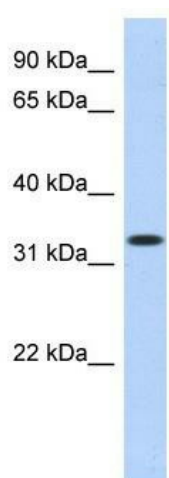
### MPPED2 Rabbit Polyclonal Antibody

#### Product data:

Product Type:	Primary Antibodies
Applications:	WB
Recommended Dilution:	WB
Reactivity:	Human
Host:	Rabbit
Isotype:	IgG
Clonality:	Polyclonal
Immunogen:	The immunogen for anti-MPPED2 antibody: synthetic peptide directed towards the N terminal of human MPPED2. Synthetic peptide located within the following region: RFQPPHVHMVDPIPYDTPKPAGHTRFVCISDTHSRTDGIQMPYGDILLHT
Formulation:	Liquid. Purified antibody supplied in 1x PBS buffer with 0.09% (w/v) sodium azide and 2% sucrose. <i>Note that this product is shipped as lyophilized powder to China customers.</i>
Purification:	Affinity Purified
Conjugation:	Unconjugated
Storage:	Store at -20°C as received.
Stability:	Stable for 12 months from date of receipt.
Predicted Protein Size:	33 kDa
Gene Name:	metallophosphoesterase domain containing 2
Database Link:	<a href="#">NP_001575</a> <a href="#">Entrez Gene 744 Human</a> <a href="#">Q15777</a>
Background:	The specific function of MPPED2 is not yet known.
Synonyms:	239FB; C11orf8
Note:	Immunogen Sequence Homology: Dog: 100%; Pig: 100%; Rat: 100%; Horse: 100%; Human: 100%; Mouse: 100%; Bovine: 100%; Rabbit: 100%; Guinea pig: 100%; Zebrafish: 86%



[View online »](#)

**Product images:**

WB Suggested Anti-MPPED2 Antibody Titration:  
0.2-1 ug/ml; ELISA Titer: 1: 62500; Positive  
Control: Transfected 293T