

Product datasheet for **TA346295**

IGSF1 Rabbit Polyclonal Antibody

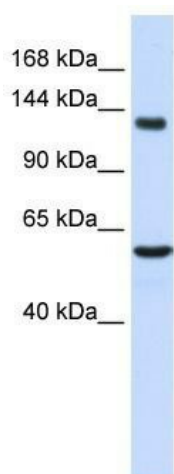
Product data:

Product Type:	Primary Antibodies
Applications:	WB
Recommended Dilution:	WB
Reactivity:	Human
Host:	Rabbit
Isotype:	IgG
Clonality:	Polyclonal
Immunogen:	The immunogen for anti-IGSF1 antibody: synthetic peptide directed towards the middle region of human IGSF1. Synthetic peptide located within the following region: PRLRTRGSETDGRDQTIALEECNQEGEPGTPANSPSSTSQRISVELPVI
Formulation:	Liquid. Purified antibody supplied in 1x PBS buffer with 0.09% (w/v) sodium azide and 2% sucrose. <i>Note that this product is shipped as lyophilized powder to China customers.</i>
Purification:	Affinity Purified
Conjugation:	Unconjugated
Storage:	Store at -20°C as received.
Stability:	Stable for 12 months from date of receipt.
Predicted Protein Size:	149 kDa
Gene Name:	immunoglobulin superfamily member 1
Database Link:	NP_001546 Entrez Gene 3547 Human Q8N6C5



[View online »](#)

Background:	Members of the immunoglobulin (Ig) superfamily, which includes IGSF1, have a variety of functions, but all appear to play a role in cell recognition and the regulation of cell behavior. Members of the immunoglobulin (Ig) superfamily (see MIM 147100), which includes IGSF1, have a variety of functions, but all appear to play a role in cell recognition and the regulation of cell behavior. [supplied by OMIM]. PRIMARYREFSEQ_SPAN PRIMARY_IDENTIFIER PRIMARY_SPAN COMP 1-227 AB058894.2 1-227 228-250 Y10523.1 173-195 251-1082 BC063884.1 235-1066 1083-1084 Y10523.1 1028-1029 1085-2690 BC063884.1 1069-2674 2691-3713 AF034198.1 2661-3683 3714-4492 BC063884.1 3698-4476
Synonyms:	CHTE; IGCD1; IGDC1; INHBP; p120; PGSF2
Note:	Immunogen Sequence Homology: Human: 100%; Pig: 86%; Horse: 86%; Mouse: 86%; Rabbit: 86%; Guinea pig: 86%; Rat: 79%
Protein Families:	Transmembrane

Product images:

WB Suggested Anti-IGSF1 Antibody Titration: 0.2-1 ug/ml; ELISA Titer: 1: 62500; Positive Control: Human Liver