

## Product datasheet for **TA346292**

### IFIT2 Rabbit Polyclonal Antibody

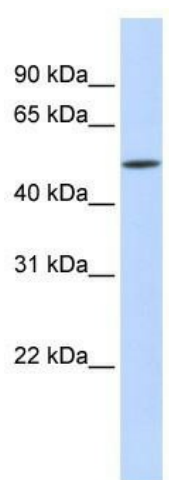
#### Product data:

Product Type:	Primary Antibodies
Applications:	WB
Recommended Dilution:	WB
Reactivity:	Human
Host:	Rabbit
Isotype:	IgG
Clonality:	Polyclonal
Immunogen:	The immunogen for anti-IFIT2 antibody: synthetic peptide directed towards the N terminal of human IFIT2. Synthetic peptide located within the following region: SENNKNSLESSLRQLKCHFTWNLMEGENSLDDFEDKVFYRTEFQNREFKA
Formulation:	Liquid. Purified antibody supplied in 1x PBS buffer with 0.09% (w/v) sodium azide and 2% sucrose. <i>Note that this product is shipped as lyophilized powder to China customers.</i>
Purification:	Affinity Purified
Conjugation:	Unconjugated
Storage:	Store at -20°C as received.
Stability:	Stable for 12 months from date of receipt.
Predicted Protein Size:	55 kDa
Gene Name:	interferon induced protein with tetratricopeptide repeats 2
Database Link:	<a href="#">NP_001538</a> <a href="#">Entrez Gene 3433 Human</a> <a href="#">P09913</a>
Background:	IFIT2 belongs to the IFIT family. It contains 6 TPR repeats. IFIT2 inhibits migration activity and increases survival of oral squamous cell carcinoma.
Synonyms:	cig42; G10P2; GARG-39; IFI-54; IFI-54K; IFI54; IFIT-2; ISG-54 K; ISG-54K; ISG54; P54
Note:	Immunogen Sequence Homology: Human: 100%



[View online »](#)

## Product images:



WB Suggested Anti-IFIT2 Antibody Titration: 0.2-1 ug/ml; ELISA Titer: 1: 62500; Positive Control: Human Liver