

## Product datasheet for **TA346291**

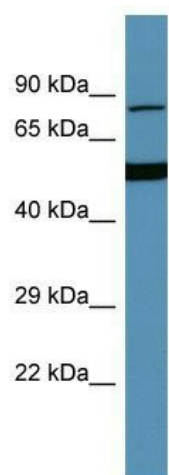
### HGFAC Rabbit Polyclonal Antibody

#### Product data:

|                         |   |
|-------------------------|---|
| Product Type:           | Primary Antibodies  |
| Applications:           | WB  |
| Recommended Dilution:   | WB  |
| Reactivity:             | Human   |
| Host:                   | Rabbit  |
| Isotype:                | IgG   |
| Clonality:              | Polyclonal  |
| Immunogen:              | The immunogen for Anti-HGFAC antibody is: synthetic peptide directed towards the C-terminal region of Human HGFAC. Synthetic peptide located within the following region: SSLREALVPLVADHKCSSPEVYGADISPMLCAGYFDCKSDACQGDSGGP |
| Formulation:            | Liquid. Purified antibody supplied in 1x PBS buffer with 0.09% (w/v) sodium azide and 2% sucrose.<br><i>Note that this product is shipped as lyophilized powder to China customers.</i>                                     |
| Purification:           | Affinity Purified   |
| Conjugation:            | Unconjugated  |
| Storage:                | Store at -20°C as received.   |
| Stability:              | Stable for 12 months from date of receipt.  |
| Predicted Protein Size: | 72 kDa  |
| Gene Name:              | HGF activator   |
| Database Link:          | <a href="#">NP_001284368</a><br><a href="#">Entrez Gene 3083 Human</a><br><a href="#">Q04756</a>  |
| Background:             | The function of this protein remains unknown.   |
| Synonyms:               | HGFA  |
| Note:                   | Immunogen Sequence Homology: Dog: 100%; Pig: 100%; Rat: 100%; Horse: 100%; Human: 100%; Mouse: 100%; Bovine: 100%; Guinea pig: 100%   |
| Protein Families:       | Druggable Genome, Protease, Secreted Protein, Transmembrane   |



[View online »](#)

**Product images:**

Host: Rabbit; Target Name: HGFAC; Sample  
Tissue: THP-1 Whole Cell lysates; Antibody  
Dilution: 1.0 ug/ml