

## Product datasheet for **TA346285**

### CRMP1 Rabbit Polyclonal Antibody

#### Product data:

Product Type:	Primary Antibodies
Applications:	WB
Recommended Dilution:	WB
Reactivity:	Human, Mouse
Host:	Rabbit
Isotype:	IgG
Clonality:	Polyclonal
Immunogen:	The immunogen for anti-CRMP1 antibody: synthetic peptide directed towards the C terminal of human CRMP1. Synthetic peptide located within the following region: SSPSKHQPPPIRNLHQSNFSLGAQIDDNNPRRTGHRIVAPPGGRSNITS
Formulation:	Liquid. Purified antibody supplied in 1x PBS buffer with 0.09% (w/v) sodium azide and 2% sucrose. <i>Note that this product is shipped as lyophilized powder to China customers.</i>
Purification:	Affinity Purified
Conjugation:	Unconjugated
Storage:	Store at -20°C as received.
Stability:	Stable for 12 months from date of receipt.
Predicted Protein Size:	62 kDa
Gene Name:	collapsin response mediator protein 1
Database Link:	<a href="#">NP_001304</a> <a href="#">Entrez Gene 12933 Mouse</a> <a href="#">Entrez Gene 1400 Human</a> <a href="#">Q14194</a>



[View online »](#)

**Background:**

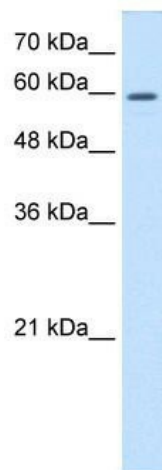
CRMP1 is a member of a family of cytosolic phosphoproteins expressed exclusively in the nervous system. The protein is thought to be a part of the semaphorin signal transduction pathway implicated in semaphorin-induced growth cone collapse during neural development. This gene encodes a member of a family of cytosolic phosphoproteins expressed exclusively in the nervous system. The encoded protein is thought to be a part of the semaphorin signal transduction pathway implicated in semaphorin-induced growth cone collapse during neural development. Alternative splicing results in multiple transcript variants. This gene encodes a member of a family of cytosolic phosphoproteins expressed exclusively in the nervous system. The encoded protein is thought to be a part of the semaphorin signal transduction pathway implicated in semaphorin-induced growth cone collapse during neural development. Alternative splicing results in multiple transcript variants.

**Synonyms:**

CRMP-1; DPYSL1; DRP-1; DRP1; ULIP-3

**Note:**

Immunogen Sequence Homology: Dog: 100%; Pig: 100%; Rat: 100%; Horse: 100%; Human: 100%; Mouse: 100%; Bovine: 100%; Guinea pig: 100%; Rabbit: 92%; Zebrafish: 83%

**Product images:**

WB Suggested Anti-CRMP1 Antibody Titration:  
0.2-1 ug/ml; Positive Control: HepG2 cell lysate