

Product datasheet for **TA346284**

CRMP1 Rabbit Polyclonal Antibody

Product data:

Product Type:	Primary Antibodies
Applications:	IHC, WB
Recommended Dilution:	WB, IHC
Reactivity:	Human, Rat, Mouse
Host:	Rabbit
Isotype:	IgG
Clonality:	Polyclonal
Immunogen:	The immunogen for anti-CRMP1 antibody: synthetic peptide directed towards the N terminal of human CRMP1. Synthetic peptide located within the following region: SYQGKKSIPHITSDRLLIKGGRIINDDQSLYADVLEDGLIKQIGENLIV
Formulation:	Liquid. Purified antibody supplied in 1x PBS buffer with 0.09% (w/v) sodium azide and 2% sucrose. <i>Note that this product is shipped as lyophilized powder to China customers.</i>
Purification:	Affinity Purified
Conjugation:	Unconjugated
Storage:	Store at -20°C as received.
Stability:	Stable for 12 months from date of receipt.
Predicted Protein Size:	62 kDa
Gene Name:	collapsin response mediator protein 1
Database Link:	NP_001304 Entrez Gene 12933 Mouse Entrez Gene 25415 Rat Entrez Gene 1400 Human Q14194



[View online »](#)

Background:

CRMP1 is a member of a family of cytosolic phosphoproteins expressed exclusively in the nervous system. The protein is thought to be a part of the semaphorin signal transduction pathway implicated in semaphorin-induced growth cone collapse during neural development. This gene encodes a member of a family of cytosolic phosphoproteins expressed exclusively in the nervous system. The encoded protein is thought to be a part of the semaphorin signal transduction pathway implicated in semaphorin-induced growth cone collapse during neural development. Alternative splicing results in multiple transcript variants. This gene encodes a member of a family of cytosolic phosphoproteins expressed exclusively in the nervous system. The encoded protein is thought to be a part of the semaphorin signal transduction pathway implicated in semaphorin-induced growth cone collapse during neural development. Alternative splicing results in multiple transcript variants.

Synonyms:

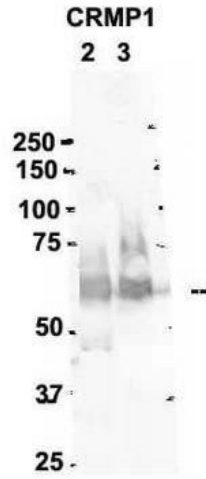
CRMP-1; DPYSL1; DRP-1; DRP1; ULIP-3

Note:

Immunogen Sequence Homology: Human: 100%; Dog: 93%; Pig: 93%; Rat: 93%; Horse: 93%; Bovine: 93%; Guinea pig: 93%; Mouse: 92%; Rabbit: 86%; Zebrafish: 86%

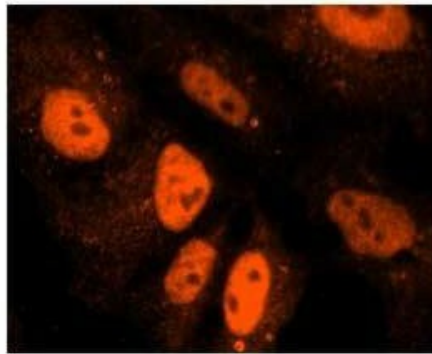
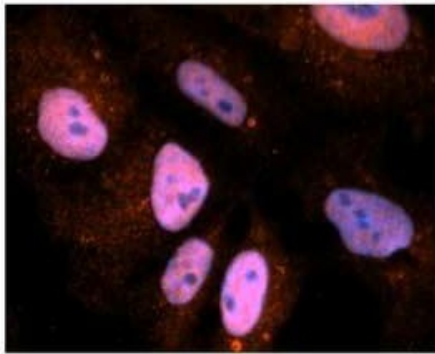
Product images:

WB Suggested Anti-CRMP1 Antibody Titration:
0.2-1 ug/ml; ELISA Titer: 1: 312500; Positive
Control: 721_B cell lysate



Sample Type: 2. mouse brain extracts (80ug); 3. rat brain extract (80ug); Primary Antibody Dilution: 2 ug/ml; Secondary Antibody: IRDye 800CW goat anti-rabbit from Li-COR Bioscience; Secondary Antibody Dilution: 1: 20, 000; Image Submitted by: Yuzhi Chen; University of Arkansas for Medical Science

CRMP1



Sample Type: NT2 cells; Red: Antibody; Blue: DAPI; Primary Dilution: 1 ug/50ul antibody; Secondary Antibody: Alexa goat anti-rabbit 594; Image Submitted by: Yuzhi Chen, University of Arkansas for Medical Sciences