

## Product datasheet for **TA346280**

### SIGLEC6 Rabbit Polyclonal Antibody

#### Product data:

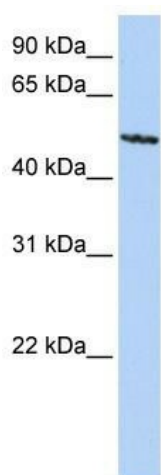
Product Type:	Primary Antibodies
Applications:	WB
Recommended Dilution:	WB
Reactivity:	Human
Host:	Rabbit
Isotype:	IgG
Clonality:	Polyclonal
Immunogen:	The immunogen for anti-SIGLEC6 antibody: synthetic peptide directed towards the C terminal of human SIGLEC6. Synthetic peptide located within the following region: IVSDHPAEAGPISEDEQELHYAVLHFHKVQPQEPKVTDEYSEIKIHK
Formulation:	Liquid. Purified antibody supplied in 1x PBS buffer with 0.09% (w/v) sodium azide and 2% sucrose. <i>Note that this product is shipped as lyophilized powder to China customers.</i>
Purification:	Affinity Purified
Conjugation:	Unconjugated
Storage:	Store at -20°C as received.
Stability:	Stable for 12 months from date of receipt.
Predicted Protein Size:	47 kDa
Gene Name:	sialic acid binding Ig like lectin 6
Database Link:	<a href="#">NP_001236</a> <a href="#">Entrez Gene 946 Human</a> <a href="#">O43699</a>
Background:	SIGLEC6 is a Putative adhesion molecule that mediates sialic-acid dependent binding to cells. It binds to alpha-2,6-linked sialic acid. The sialic acid recognition site may be masked by cis interactions with sialic acids on the same cell surface.
Synonyms:	CD33L; CD33L1; CD33L2; CD327; CDW327; OBBP1
Note:	Immunogen Sequence Homology: Human: 100%



[View online »](#)

Protein Families: Druggable Genome, Secreted Protein, Transmembrane

### Product images:



WB Suggested Anti-SIGLEC6 Antibody Titration:  
0.2-1 ug/ml; ELISA Titer: 1: 312500; Positive  
Control: HepG2 cell lysate