

Product datasheet for **TA346279**

SIGLEC6 Rabbit Polyclonal Antibody

Product data:

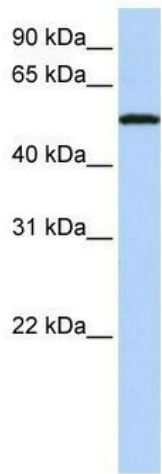
Product Type:	Primary Antibodies
Applications:	WB
Recommended Dilution:	WB
Reactivity:	Human
Host:	Rabbit
Isotype:	IgG
Clonality:	Polyclonal
Immunogen:	The immunogen for anti-SIGLEC6 antibody: synthetic peptide directed towards the N terminal of human SIGLEC6. Synthetic peptide located within the following region: VPVATNDPDEEVQEETRGRFHLLWDPRRKNCLSIRDARRRDNAAYFFRL
Formulation:	Liquid. Purified antibody supplied in 1x PBS buffer with 0.09% (w/v) sodium azide and 2% sucrose. <i>Note that this product is shipped as lyophilized powder to China customers.</i>
Purification:	Affinity Purified
Conjugation:	Unconjugated
Storage:	Store at -20°C as received.
Stability:	Stable for 12 months from date of receipt.
Predicted Protein Size:	47 kDa
Gene Name:	sialic acid binding Ig like lectin 6
Database Link:	NP_001236 Entrez Gene 946 Human O43699
Background:	SIGLEC6 is a Putative adhesion molecule that mediates sialic-acid dependent binding to cells. It binds to alpha-2,6-linked sialic acid. The sialic acid recognition site may be masked by cis interactions with sialic acids on the same cell surface.
Synonyms:	CD33L; CD33L1; CD33L2; CD327; CDW327; OBBP1
Note:	Immunogen Sequence Homology: Pig: 100%; Human: 100%; Horse: 86%; Bovine: 79%



[View online »](#)

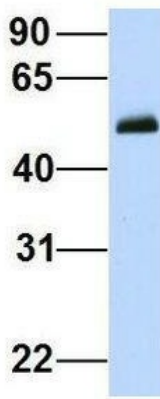
Protein Families: Druggable Genome, Secreted Protein, Transmembrane

Product images:



WB Suggested Anti-SIGLEC6 Antibody Titration:
0.2-1 ug/ml; ELISA Titer: 1: 12500; Positive
Control: Jurkat cell lysate

SIGLEC6



Rabbit Anti-SIGLEC6
Sample Type: Human Fetal
Muscle
Antibody Concentration: 1ug/mL

Host: Rabbit; Target Name: SIGLEC6; Sample
Tissue: Human Fetal Muscle; Antibody Dilution:
1.0 ug/ml