

## Product datasheet for **TA346277**

### 15 Lipoxygenase 2 (ALOX15B) Rabbit Polyclonal Antibody

#### Product data:

Product Type:	Primary Antibodies
Applications:	WB
Recommended Dilution:	WB
Reactivity:	Human
Host:	Rabbit
Isotype:	IgG
Clonality:	Polyclonal
Immunogen:	The immunogen for anti-ALOX15B antibody: synthetic peptide directed towards the middle region of human ALOX15B. Synthetic peptide located within the following region: LLIPHTRYTLHINTLARELLIVPGQVDRSTGIGIEGFSELIQRNMKQLN
Formulation:	Liquid. Purified antibody supplied in 1x PBS buffer with 0.09% (w/v) sodium azide and 2% sucrose. <i>Note that this product is shipped as lyophilized powder to China customers.</i>
Purification:	Affinity Purified
Conjugation:	Unconjugated
Storage:	Store at -20°C as received.
Stability:	Stable for 12 months from date of receipt.
Predicted Protein Size:	76 kDa
Gene Name:	arachidonate 15-lipoxygenase, type B
Database Link:	<a href="#">NP_001132</a> <a href="#">Entrez Gene 247 Human</a> <a href="#">O15296</a>
Background:	ALOX15B is a member of the lipoxygenase family of structurally related nonheme iron dioxygenases involved in the production of fatty acid hydroperoxides. The protein converts arachidonic acid exclusively to 15S-hydroperoxyeicosatetraenoic acid, while metabolizing linoleic acid less effectively.
Synonyms:	15-LOX-2



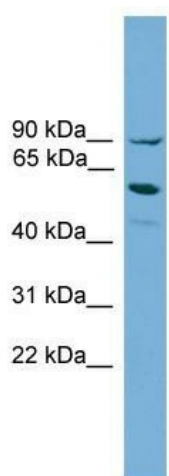
[View online »](#)

**Note:** Immunogen Sequence Homology: Dog: 100%; Pig: 100%; Rat: 100%; Horse: 100%; Human: 100%; Mouse: 100%; Bovine: 100%; Rabbit: 100%; Guinea pig: 86%

**Protein Families:** Druggable Genome

**Protein Pathways:** Arachidonic acid metabolism, Metabolic pathways

**Product images:**



WB Suggested Anti-ALOX15B Antibody Titration:  
0.2-1 ug/ml; ELISA Titer: 1: 312500; Positive  
Control: HepG2 cell lysate