

Product datasheet for **TA346275**

ACTN3 Rabbit Polyclonal Antibody

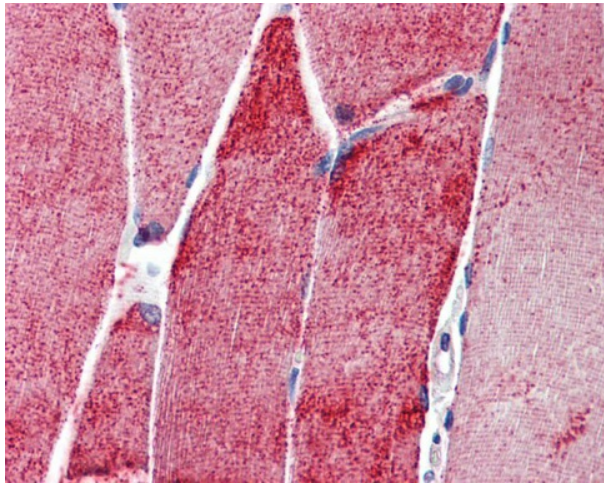
Product data:

Product Type:	Primary Antibodies
Applications:	IHC
Recommended Dilution:	IHC
Reactivity:	Human
Host:	Rabbit
Isotype:	IgG
Clonality:	Polyclonal
Immunogen:	The immunogen for anti-ACTN3 antibody: synthetic peptide directed towards the N terminal of human ACTN3. Synthetic peptide located within the following region: VQNFHTSWKDGLALCALIHRHRPDLIDYAKLRKDDPIGNLNTAFEVAEKY
Formulation:	Liquid. Purified antibody supplied in 1x PBS buffer with 0.09% (w/v) sodium azide and 2% sucrose. <i>Note that this product is shipped as lyophilized powder to China customers.</i>
Purification:	Affinity Purified
Conjugation:	Unconjugated
Storage:	Store at -20°C as received.
Stability:	Stable for 12 months from date of receipt.
Predicted Protein Size:	103 kDa
Gene Name:	actinin alpha 3 (gene/pseudogene)
Database Link:	NP_001095 Entrez Gene 89 Human Q08043



[View online »](#)

- Background:** Alpha-actinin is an actin-binding protein with multiple roles in different cell types. This protein expression is limited to skeletal muscle. It is localized to the Z-disc and analogous dense bodies, where it helps to anchor the myofibrillar actin filaments. Alpha-actinin is an actin-binding protein with multiple roles in different cell types. This gene expression is limited to skeletal muscle. It is localized to the Z-disc and analogous dense bodies, where it helps to anchor the myofibrillar actin filaments. Publication Note: This RefSeq record includes a subset of the publications that are available for this gene. Please see the Entrez Gene record to access additional publications.
- Synonyms:** MGC117002; MGC117005
- Note:** Immunogen Sequence Homology: Dog: 100%; Pig: 100%; Rat: 100%; Horse: 100%; Human: 100%; Mouse: 100%; Bovine: 100%; Rabbit: 100%; Guinea pig: 100%; Zebrafish: 93%
- Protein Pathways:** Adherens junction, Arrhythmogenic right ventricular cardiomyopathy (ARVC), Focal adhesion, Leukocyte transendothelial migration, Regulation of actin cytoskeleton, Systemic lupus erythematosus, Tight junction

Product images:

Skeletal muscle