

Product datasheet for **TA346273**

ABP1 (AOC1) Rabbit Polyclonal Antibody

Product data:

Product Type:	Primary Antibodies
Applications:	IHC, WB
Recommended Dilution:	WB, IHC
Reactivity:	Human
Host:	Rabbit
Isotype:	IgG
Clonality:	Polyclonal
Immunogen:	The immunogen for anti-ABP1 antibody: synthetic peptide directed towards the C terminal of human ABP1. Synthetic peptide located within the following region: QFLHNNENIENEDLVAWVTVGFLHIPHSEDIPNTATPGNSVGFLLRPFNF
Formulation:	Liquid. Purified antibody supplied in 1x PBS buffer with 0.09% (w/v) sodium azide and 2% sucrose. <i>Note that this product is shipped as lyophilized powder to China customers.</i>
Purification:	Affinity Purified
Conjugation:	Unconjugated
Storage:	Store at -20°C as received.
Stability:	Stable for 12 months from date of receipt.
Predicted Protein Size:	83 kDa
Gene Name:	amine oxidase, copper containing 1
Database Link:	NP_001082 Entrez Gene 26 Human P19801



[View online »](#)

Background: ABP1 is a membrane glycoprotein that is expressed in many epithelium-rich and/or hematopoietic tissues and oxidatively deaminates putrescine and histamine. The protein may play a role in controlling the level of histamine and/or putrescine in these tissues. It also binds to and is inhibited by amiloride, a diuretic that acts by closing epithelial sodium ion channels. This gene encodes a membrane glycoprotein that is expressed in many epithelium-rich and/or hematopoietic tissues and oxidatively deaminates putrescine and histamine. The protein may play a role in controlling the level of histamine and/or putrescine in these tissues. It also binds to and is inhibited by amiloride, a diuretic that acts by closing epithelial sodium ion channels.

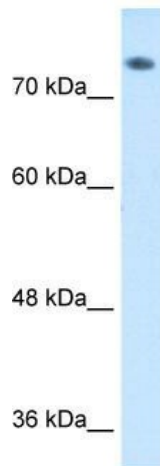
Synonyms: ABP; ABP1; DAO; DAO1; KAO

Note: Immunogen Sequence Homology: Pig: 100%; Rat: 100%; Horse: 100%; Human: 100%; Dog: 93%; Rabbit: 93%; Zebrafish: 93%; Guinea pig: 93%; Mouse: 92%; Bovine: 86%

Protein Families: Secreted Protein

Protein Pathways: Arginine and proline metabolism, Histidine metabolism, Tryptophan metabolism

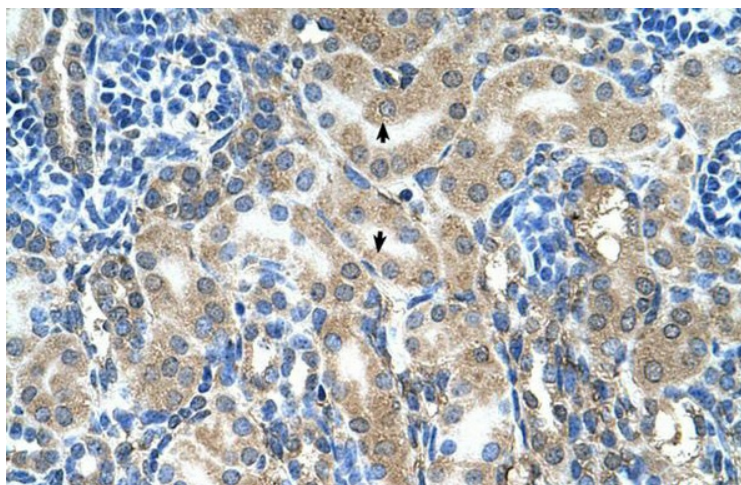
Product images:



Rabbit Anti-ABP1 Antibody
Catalog Number: ARP41908
Lot Number: QC15295
Lane: HepG2 Cell Lysate

Antibody Titration: 1.0µg/ml
Gel Concentration: 8%

WB Suggested Anti-ABP1 Antibody; Titration: 1 ug/ml; Positive Control: HepG2 cell lysate



Rabbit Anti-ABP1 Antibody; Paraffin Embedded Tissue: Human Kidney; Cellular Data: Epithelial cells of renal tubule; Antibody Concentration: 4.0-8.0 ug/ml; Magnification: 400X