

## Product datasheet for **TA346266**

### Noradrenaline transporter (SLC6A2) Rabbit Polyclonal Antibody

#### Product data:

Product Type:	Primary Antibodies
Applications:	WB
Recommended Dilution:	WB
Reactivity:	Human, Mouse
Host:	Rabbit
Isotype:	IgG
Clonality:	Polyclonal
Immunogen:	The immunogen for anti-SLC6A2 antibody: synthetic peptide directed towards the middle region of human SLC6A2. Synthetic peptide located within the following region: STLSGSTFWAVVFFVMLLALGLDSSMGGMEAVITGLADDFQVLKRHRKLF
Formulation:	Liquid. Purified antibody supplied in 1x PBS buffer with 0.09% (w/v) sodium azide and 2% sucrose. <i>Note that this product is shipped as lyophilized powder to China customers.</i>
Purification:	Affinity Purified
Conjugation:	Unconjugated
Storage:	Store at -20°C as received.
Stability:	Stable for 12 months from date of receipt.
Predicted Protein Size:	69 kDa
Gene Name:	solute carrier family 6 member 2
Database Link:	<a href="#">NP_001034</a> <a href="#">Entrez Gene 20538 Mouse</a> <a href="#">Entrez Gene 6530 Human</a> <a href="#">P23975</a>



[View online »](#)

**Background:** The SLC6A2 gene encodes a norepinephrine (noradrenaline) transporter, which is responsible for reuptake of norepinephrine into presynaptic nerve terminals and is a regulator of norepinephrine homeostasis. The SLC6A2 gene encodes a norepinephrine (noradrenaline) transporter, which is responsible for reuptake of norepinephrine into presynaptic nerve terminals and is a regulator of norepinephrine homeostasis (Kim et al., 2006 [PubMed 17146058]). [supplied by OMIM]. Publication Note: This RefSeq record includes a subset of the publications that are available for this gene. Please see the Entrez Gene record to access additional publications.

**Synonyms:** NAT1; NET; NET1; SLC6A5

**Note:** Immunogen Sequence Homology: Dog: 100%; Pig: 100%; Rat: 100%; Horse: 100%; Human: 100%; Mouse: 100%; Bovine: 100%; Rabbit: 100%; Guinea pig: 100%

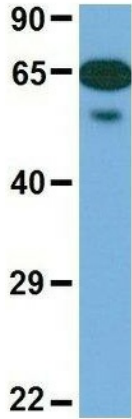
**Protein Families:** Druggable Genome, Transmembrane

### Product images:



WB Suggested Anti-SLC6A2 Antibody Titration:  
0.2-1 ug/ml; ELISA Titer: 1: 312500; Positive  
Control: Human heart

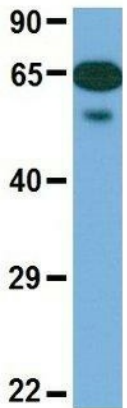
### SLC6A2



Rabbit Anti-SLC6A2  
Sample Type: Human Fetal Heart  
Antibody Concentration: 1ug/mL

Host: Rabbit; Target Name: SLC6A2; Sample  
Tissue: Human Fetal Heart; Antibody Dilution: 1.0  
ug/ml

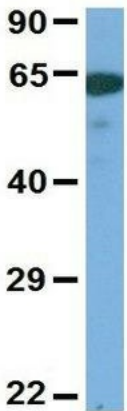
### SLC6A2



Rabbit Anti-SLC6A2  
Sample Type: Human Fetal Heart  
Antibody Concentration: 1ug/mL

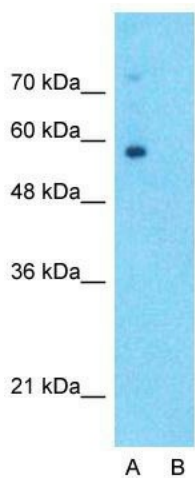
Host: Rabbit; Target Name: SLC6A2; Sample  
Tissue: Human Fetal Heart; Antibody Dilution: 1.0  
ug/ml

### SLC6A2



Rabbit Anti-SLC6A2  
Sample Type: Human Adult  
Placenta  
Antibody Concentration: 1ug/mL

Host: Rabbit; Target Name: SLC6A2; Sample  
Tissue: Human Adult Placenta; Antibody Dilution:  
1.0 ug/ml



### Anti-SLC6A2 Western Blot & Peptide Block Validation

Lysate: Fetal Lung

Lane A: Primary Antibody  
Lane B: Primary Antibody + Blocking Peptide

Primary Antibody Concentration: 1.0 $\mu$ g/ml  
Peptide Concentration: 5.0 $\mu$ g/ml  
Lysate Quantity: 25 $\mu$ g/lane  
Gel Concentration: 12%

Host: Rabbit; Target Name: SLC6A2; Sample Tissue: Human Fetal Lung; Lane A: Primary Antibody; Lane B: Primary Antibody + Blocking Peptide; Primary Antibody Concentration: 1 ug/ml; Peptide Concentration: 5 ug/ml; Lysate Quantity: 25 ug/lane/lane; Gel Concentration: 0.12