

Product datasheet for **TA346265**

Noradrenaline transporter (SLC6A2) Rabbit Polyclonal Antibody

Product data:

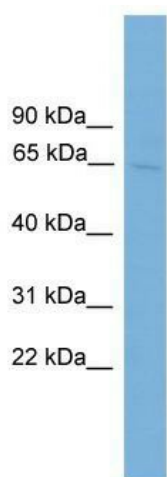
Product Type:	Primary Antibodies
Applications:	WB
Recommended Dilution:	WB
Reactivity:	Human, Rat
Host:	Rabbit
Isotype:	IgG
Clonality:	Polyclonal
Immunogen:	The immunogen for anti-SLC6A2 antibody: synthetic peptide directed towards the middle region of human SLC6A2. Synthetic peptide located within the following region: FTAAEFYERGVLHLHESSGIHDIGLPQWQLLLCLMWWIVLYFSLWKGV
Formulation:	Liquid. Purified antibody supplied in 1x PBS buffer with 0.09% (w/v) sodium azide and 2% sucrose.
Purification:	Affinity Purified
Conjugation:	Unconjugated
Storage:	Store at -20°C as received.
Stability:	Stable for 12 months from date of receipt.
Predicted Protein Size:	69 kDa
Gene Name:	solute carrier family 6 member 2
Database Link:	NP_001034 Entrez Gene 83511 Rat Entrez Gene 6530 Human P23975
Background:	The SLC6A2 gene encodes a norepinephrine (noradrenaline) transporter, which is responsible for reuptake of norepinephrine into presynaptic nerve terminals and is a regulator of norepinephrine homeostasis.
Synonyms:	NAT1; NET; NET1; SLC6A5
Note:	Immunogen Sequence Homology: Dog: 100%; Rat: 100%; Horse: 100%; Human: 100%; Mouse: 100%; Bovine: 100%; Rabbit: 100%; Pig: 93%; Guinea pig: 93%



[View online »](#)

Protein Families: Druggable Genome, Transmembrane

Product images:



WB Suggested Anti-SLC6A2 Antibody Titration:
0.2-1 ug/ml; ELISA Titer: 1: 312500; Positive
Control: HepG2 cell lysate