

Product datasheet for **TA346262**

RPAIN Rabbit Polyclonal Antibody

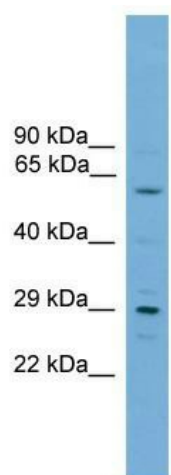
Product data:

Product Type:	Primary Antibodies
Applications:	WB
Recommended Dilution:	WB
Reactivity:	Human
Host:	Rabbit
Isotype:	IgG
Clonality:	Polyclonal
Immunogen:	The immunogen for anti-RPAIN antibody: synthetic peptide directed towards the C terminal of human RPAIN. Synthetic peptide located within the following region: VVCQCGLSIPSHSELTEQKLRACLEGSINEHSAHCPHTPEFSVTGGTEE
Formulation:	Liquid. Purified antibody supplied in 1x PBS buffer with 0.09% (w/v) sodium azide and 2% sucrose. <i>Note that this product is shipped as lyophilized powder to China customers.</i>
Purification:	Affinity Purified
Conjugation:	Unconjugated
Storage:	Store at -20°C as received.
Stability:	Stable for 12 months from date of receipt.
Predicted Protein Size:	25 kDa
Gene Name:	RPA interacting protein
Database Link:	NP_001028174 Entrez Gene 84268 Human Q86UA6
Background:	RPAIN mediates the import of RPA complex into the nucleus, possibly via some interaction with importin beta. Isoform 2 is sumoylated and mediates the localization of RPA complex into the PML body of the nucleus, thereby participating in RPA function in DNA metabolism.
Synonyms:	HRIP; RIP
Note:	Immunogen Sequence Homology: Human: 100%; Rat: 93%; Horse: 93%; Pig: 86%; Guinea pig: 86%; Bovine: 85%; Mouse: 79%



[View online »](#)

Product images:



WB Suggested Anti-RPAIN Antibody Titration: 0.2-1 ug/ml; ELISA Titer: 1: 62500; Positive Control: 293T cell lysate. RPAIN is supported by BioGPS gene expression data to be expressed in HEK293T