

## Product datasheet for **TA346261**

### **RHOBTB1 Rabbit Polyclonal Antibody**

#### **Product data:**

<b>Product Type:</b>	Primary Antibodies
<b>Applications:</b>	IHC, WB
<b>Recommended Dilution:</b>	WB, IHC
<b>Reactivity:</b>	Human
<b>Host:</b>	Rabbit
<b>Isotype:</b>	IgG
<b>Clonality:</b>	Polyclonal
<b>Immunogen:</b>	The immunogen for anti-RHOBTB1 antibody: synthetic peptide directed towards the middle region of human RHOBTB1. Synthetic peptide located within the following region: DNQEYFERHRWPPVWYLKEEDHYQRVKREKEDIALNKHRSRRKWCFWN
<b>Formulation:</b>	Liquid. Purified antibody supplied in 1x PBS buffer with 0.09% (w/v) sodium azide and 2% sucrose. <i>Note that this product is shipped as lyophilized powder to China customers.</i>
<b>Purification:</b>	Affinity Purified
<b>Conjugation:</b>	Unconjugated
<b>Storage:</b>	Store at -20°C as received.
<b>Stability:</b>	Stable for 12 months from date of receipt.
<b>Predicted Protein Size:</b>	77 kDa
<b>Gene Name:</b>	Rho related BTB domain containing 1
<b>Database Link:</b>	<a href="#">NP_055651</a> <a href="#">Entrez Gene 9886 Human</a> <a href="#">O94844</a>



[View online »](#)

**Background:**

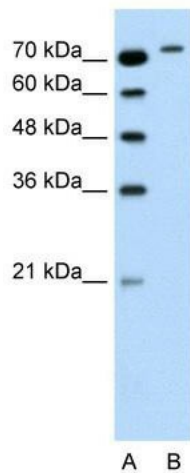
RHOBTB1 belongs to the Rho family of the small GTPase superfamily. It contains a GTPase domain, a proline-rich region, a tandem of 2 BTB (broad complex, tramtrack, and bric-a-brac) domains, and a conserved C-terminal region. The protein plays a role in small GTPase-mediated signal transduction and the organization of the actin filament system. The protein encoded by this gene belongs to the Rho family of the small GTPase superfamily. It contains a GTPase domain, a proline-rich region, a tandem of 2 BTB (broad complex, tramtrack, and bric-a-brac) domains, and a conserved C-terminal region. The protein plays a role in small GTPase-mediated signal transduction and the organization of the actin filament system. Alternate transcriptional splice variants have been characterized.

**Synonyms:**

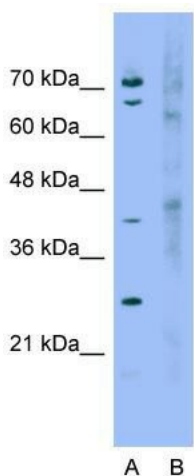
KIAA0740; MGC33059; MGC33841

**Note:**

Immunogen Sequence Homology: Dog: 100%; Pig: 100%; Rat: 100%; Goat: 100%; Horse: 100%; Human: 100%; Mouse: 100%; Bovine: 100%; Rabbit: 100%; Guinea pig: 100%; Zebrafish: 93%; Sheep: 79%

**Product images:**

WB Suggested Anti-RHOBTB1 Antibody Titration: 0.2-1 ug/ml; Positive Control: Jurkat cell lysate



**Anti-RHOBTB1 Western Blot & Peptide Block Validation**

Lysate: Jurkat Cell

Lane A: Primary Antibody  
Lane B: Primary Antibody + Blocking Peptide

Primary Antibody Concentration: 4.0 µg/ml  
Peptide Concentration: 2.0 µg/ml  
Lysate Quantity: 25 µg/lane  
Gel Concentration: 12%

Host: Rabbit; Target Name: RHOBTB1; Sample Tissue: Jurkat; Lane A: Primary Antibody; Lane B: Primary Antibody + Blocking Peptide; Primary Antibody Concentration: 4.0 µg/mL; Peptide Concentration: 2.0 µg/mL; Lysate Quantity: 25 µg/lane; Gel Concentration: 12%



Rabbit Anti-RHOBTB1 Antibody; Paraffin Embedded Tissue: Human Intestine; Cellular Data: Epithelial cells of intestinal villas; Antibody Concentration: 4.0-8.0 µg/ml; Magnification: 400X