

Product datasheet for **TA346260**

PSG6 Rabbit Polyclonal Antibody

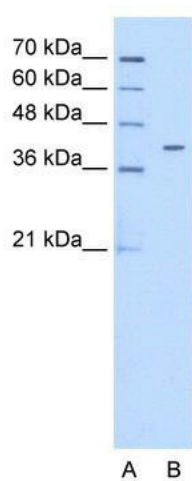
Product data:

Product Type:	Primary Antibodies
Applications:	WB
Recommended Dilution:	WB
Reactivity:	Human
Host:	Rabbit
Isotype:	IgG
Clonality:	Polyclonal
Immunogen:	The immunogen for anti-PSG6 antibody: synthetic peptide directed towards the N terminal of human PSG6. Synthetic peptide located within the following region: VLLLVHNLQPQLTGYIWYKGMQTDLYHYITSYVHGGQIYGPAYSGRETV
Formulation:	Liquid. Purified antibody supplied in 1x PBS buffer with 0.09% (w/v) sodium azide and 2% sucrose. <i>Note that this product is shipped as lyophilized powder to China customers.</i>
Purification:	Affinity Purified
Conjugation:	Unconjugated
Storage:	Store at -20°C as received.
Stability:	Stable for 12 months from date of receipt.
Predicted Protein Size:	47 kDa
Gene Name:	pregnancy specific beta-1-glycoprotein 6
Database Link:	NP_001027020 Entrez Gene 5675 Human Q00889
Background:	PSG6 may have a role in modulation of the innate immune system.
Synonyms:	PSBG-6; PSBG-10; PSBG-12; PSG10; PSGGB
Note:	Immunogen Sequence Homology: Human: 100%; Pig: 90%; Rat: 90%; Mouse: 90%; Guinea pig: 90%; Horse: 79%
Protein Families:	Secreted Protein



[View online »](#)

Product images:



WB Suggested Anti-PSG6 Antibody Titration: 0.2-1 ug/ml; Positive Control: HepG2 cell lysate