

Product datasheet for **TA346251**

FECH Rabbit Polyclonal Antibody

Product data:

Product Type:	Primary Antibodies
Applications:	IHC, WB
Recommended Dilution:	WB, IHC
Reactivity:	Human
Host:	Rabbit
Isotype:	IgG
Clonality:	Polyclonal
Immunogen:	The immunogen for anti-FECH antibody: synthetic peptide directed towards the N terminal of human FECH. Synthetic peptide located within the following region: QHAQGAKPQVQPQKRYESNIRKPKTGILMLNMGGPETLGDVHDFLLRFL
Formulation:	Liquid. Purified antibody supplied in 1x PBS buffer with 0.09% (w/v) sodium azide and 2% sucrose. <i>Note that this product is shipped as lyophilized powder to China customers.</i>
Purification:	Affinity Purified
Conjugation:	Unconjugated
Storage:	Store at -20°C as received.
Stability:	Stable for 12 months from date of receipt.
Predicted Protein Size:	47 kDa
Gene Name:	ferrochelatase
Database Link:	NP_001012533 Entrez Gene 2235 Human P22830



[View online »](#)

Background: Ferrochelatase is localized to the mitochondrion where it catalyzes the insertion of the ferrous form of iron into protoporphyrin IX in the heme synthesis pathway. Defects in ferrochelatase are associated with protoporphyria. Ferrochelatase is localized to the mitochondrion where it catalyzes the insertion of the ferrous form of iron into protoporphyrin IX in the heme synthesis pathway. Defects in ferrochelatase are associated with protoporphyria. Two transcript variants encoding different isoforms have been found for this gene. Ferrochelatase is localized to the mitochondrion where it catalyzes the insertion of the ferrous form of iron into protoporphyrin IX in the heme synthesis pathway. Defects in ferrochelatase are associated with protoporphyria. Two transcript variants encoding different isoforms have been found for this gene.

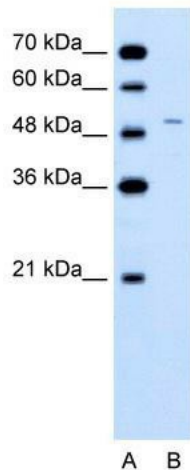
Synonyms: EPP; FCE

Note: Immunogen Sequence Homology: Human: 100%; Rat: 86%

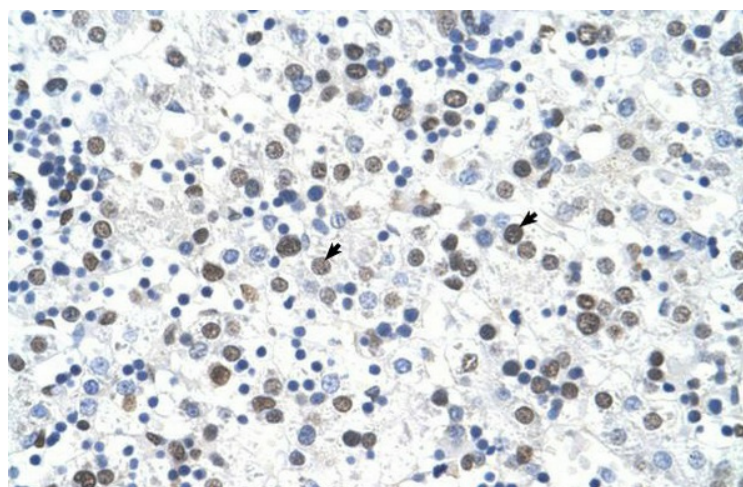
Protein Families: Druggable Genome

Protein Pathways: Metabolic pathways, Porphyrin and chlorophyll metabolism

Product images:



WB Suggested Anti-FECH Antibody Titration: 0.2-1 ug/ml; Positive Control: Jurkat cell lysate FECH is strongly supported by BioGPS gene expression data to be expressed in Human Jurkat cells



Rabbit Anti-FECH Antibody; Paraffin Embedded Tissue: Human Liver; Cellular Data: Hepatocytes; Antibody Concentration: 4.0-8.0 ug/ml; Magnification: 400X