

## Product datasheet for **TA346247**

### CYP4A22 Rabbit Polyclonal Antibody

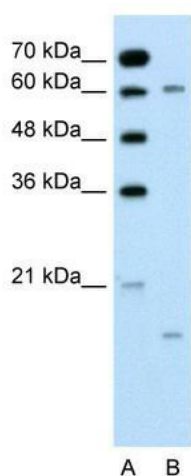
#### Product data:

Product Type:	Primary Antibodies
Applications:	IHC, WB
Recommended Dilution:	WB, IHC
Reactivity:	Human
Host:	Rabbit
Isotype:	IgG
Clonality:	Polyclonal
Immunogen:	The immunogen for anti-CYP4A22 antibody: synthetic peptide directed towards the N terminal of human CYP4A22. Synthetic peptide located within the following region: MSVSVLSPSRRLLGGVSGILQVTSLLILLIKAAQLYLHRQWLLKALQQ
Formulation:	Liquid. Purified antibody supplied in 1x PBS buffer with 0.09% (w/v) sodium azide and 2% sucrose. <i>Note that this product is shipped as lyophilized powder to China customers.</i>
Purification:	Affinity Purified
Conjugation:	Unconjugated
Storage:	Store at -20°C as received.
Stability:	Stable for 12 months from date of receipt.
Predicted Protein Size:	57 kDa
Gene Name:	cytochrome P450 family 4 subfamily A member 22
Database Link:	<a href="#">NP_001010969</a> <a href="#">Entrez Gene 284541 Human</a> <a href="#">Q5TCH4</a>

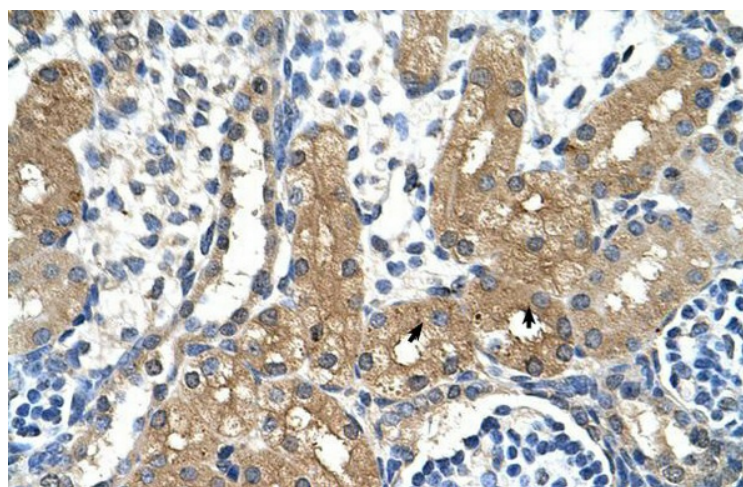


[View online »](#)

<b>Background:</b>	CYP4A22 is a member of the cytochrome P450 superfamily of enzymes. The cytochrome P450 proteins are monooxygenases which catalyze many reactions involved in drug metabolism and synthesis of cholesterol, steroids and other lipids. This gene encodes a member of the cytochrome P450 superfamily of enzymes. The cytochrome P450 proteins are monooxygenases which catalyze many reactions involved in drug metabolism and synthesis of cholesterol, steroids and other lipids. This gene is part of a cluster of cytochrome P450 genes on chromosome 1p33.
<b>Synonyms:</b>	cytochrome P450; cytochrome P450 4A22; cytochrome P450 4A22K; family 4; OTTHUMP00000009560; polypeptide 22; subfamily A
<b>Note:</b>	Immunogen Sequence Homology: Human: 100%; Bovine: 86%; Rat: 79%
<b>Protein Families:</b>	P450, Transmembrane
<b>Protein Pathways:</b>	Arachidonic acid metabolism, Fatty acid metabolism, Metabolic pathways, PPAR signaling pathway, Retinol metabolism, Vascular smooth muscle contraction

**Product images:**

WB Suggested Anti-CYP4A22 Antibody Titration:  
0.2-1 ug/ml; Positive Control: Jurkat cell lysate



Rabbit Anti-CYP4A22 Antibody; Paraffin Embedded Tissue: Human Kidney; Cellular Data: Epithelial cells of renal tubule; Antibody Concentration: 4.0-8.0 ug/ml; Magnification: 400X