

Product datasheet for **TA346244**

KIAA0859 (METTL13) Rabbit Polyclonal Antibody

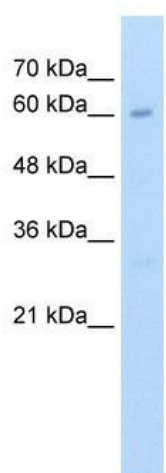
Product data:

Product Type:	Primary Antibodies
Applications:	WB
Recommended Dilution:	WB
Reactivity:	Human
Host:	Rabbit
Isotype:	IgG
Clonality:	Polyclonal
Immunogen:	The immunogen for anti-KIAA0859 antibody: synthetic peptide directed towards the C terminal of human KIAA0859. Synthetic peptide located within the following region: NEILFCQLHPEQKLATPELLETAQALERTLRKPGRGWDDTYVLSDDLKTY
Formulation:	Liquid. Purified antibody supplied in 1x PBS buffer with 0.09% (w/v) sodium azide and 2% sucrose. <i>Note that this product is shipped as lyophilized powder to China customers.</i>
Purification:	Affinity Purified
Conjugation:	Unconjugated
Storage:	Store at -20°C as received.
Stability:	Stable for 12 months from date of receipt.
Predicted Protein Size:	60 kDa
Gene Name:	methyltransferase like 13
Database Link:	NP_001007240 Entrez Gene 51603 Human Q8N6R0
Background:	The function remains unknown.
Synonyms:	5630401D24Rik; CGI-01; feat; KIAA0859
Note:	Immunogen Sequence Homology: Rat: 100%; Human: 100%; Mouse: 100%; Dog: 92%; Pig: 92%; Horse: 92%; Rabbit: 92%; Guinea pig: 92%
Protein Families:	Druggable Genome



[View online »](#)

Product images:



WB Suggested Anti-KIAA0859 Antibody Titration:
2.5 ug/ml; Positive Control: HepG2 cell lysate