

## Product datasheet for **TA346242**

### ALAD Rabbit Polyclonal Antibody

#### Product data:

Product Type:	Primary Antibodies
Applications:	WB
Recommended Dilution:	WB
Reactivity:	Human
Host:	Rabbit
Isotype:	IgG
Clonality:	Polyclonal
Immunogen:	The immunogen for anti-ALAD antibody: synthetic peptide directed towards the N terminal of human ALAD. Synthetic peptide located within the following region: MPPTSSTPSLSRPGLGQAGKPD TGSHPPPTISTSIFLSCFPTIPLSRPRT
Formulation:	Liquid. Purified antibody supplied in 1x PBS buffer with 0.09% (w/v) sodium azide and 2% sucrose. <i>Note that this product is shipped as lyophilized powder to China customers.</i>
Purification:	Affinity Purified
Conjugation:	Unconjugated
Storage:	Store at -20°C as received.
Stability:	Stable for 12 months from date of receipt.
Predicted Protein Size:	39 kDa
Gene Name:	aminolevulinate dehydratase
Database Link:	<a href="#">NP_001003945</a> <a href="#">Entrez Gene 210 Human</a> <a href="#">P13716</a>
Background:	The ALAD enzyme is composed of 8 identical subunits and catalyzes the condensation of 2 molecules of delta-aminolevulinate to form porphobilinogen (a precursor of heme, cytochromes and other hemoproteins). ALAD catalyzes the second step in the porphyrin and heme biosynthetic pathway; zinc is essential for enzymatic activity. ALAD enzymatic activity is inhibited by lead and a defect in the ALAD structural gene can cause increased sensitivity to lead poisoning and acute hepatic porphyria.



[View online »](#)

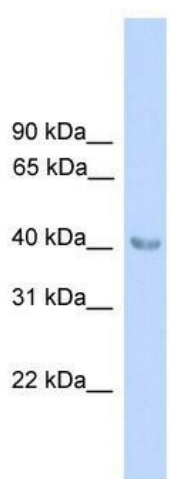
**Synonyms:** ALADH; aminolevulinate; aminolevulinate dehydratase; dehydratase; delta-; delta-aminolevulinic acid dehydratase; MGC5057; PBGS; porphobilinogen synthase

**Note:** Immunogen Sequence Homology: Human: 100%

**Protein Families:** Druggable Genome

**Protein Pathways:** Metabolic pathways, Porphyrin and chlorophyll metabolism

**Product images:**



WB Suggested Anti-ALAD Antibody Titration: 0.2-1 ug/ml; ELISA Titer: 1: 312500; Positive Control: Human Muscle