

Product datasheet for **TA346241**

Kallikrein 2 (KLK2) Rabbit Polyclonal Antibody

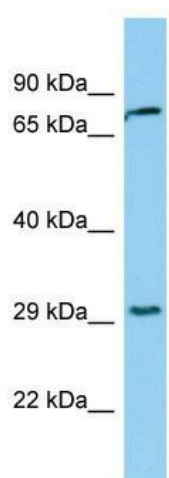
Product data:

Product Type:	Primary Antibodies
Applications:	WB
Recommended Dilution:	WB
Reactivity:	Human
Host:	Rabbit
Isotype:	IgG
Clonality:	Polyclonal
Immunogen:	The immunogen for anti-KLK2 antibody: synthetic peptide directed towards the middle region of human KLK2. Synthetic peptide located within the following region: KHQSLRPDEDSSHDLMMLRLSEPAKITDVVKVLGLPTQEPALGTTTCYASG
Formulation:	Liquid. Purified antibody supplied in 1x PBS buffer with 0.09% (w/v) sodium azide and 2% sucrose. <i>Note that this product is shipped as lyophilized powder to China customers.</i>
Purification:	Affinity Purified
Conjugation:	Unconjugated
Storage:	Store at -20°C as received.
Stability:	Stable for 12 months from date of receipt.
Predicted Protein Size:	25 kDa
Gene Name:	kallikrein related peptidase 2
Database Link:	NP_001002231 Entrez Gene 3817 Human P20151
Background:	Glandular kallikreins cleave Met-Lys and Arg-Ser bonds in kininogen to release Lys-bradykinin.
Synonyms:	hGK-1; hK2; KLK2A2
Note:	Immunogen Sequence Homology: Human: 100%; Rat: 93%; Mouse: 86%; Pig: 79%; Dog: 77%
Protein Families:	Druggable Genome, Protease



[View online »](#)

Product images:



WB Suggested Anti-KLK2 Antibody Titration: 0.2-1 ug/ml; ELISA Titer: 1: 312500; Positive Control: THP-1 cell lysate