

Product datasheet for **TA346235**

NPY1R Rabbit Polyclonal Antibody

Product data:

Product Type:	Primary Antibodies
Applications:	IHC
Recommended Dilution:	IHC
Reactivity:	Human, Mouse
Host:	Rabbit
Isotype:	IgG
Clonality:	Polyclonal
Immunogen:	The immunogen for anti-NPY1R antibody: synthetic peptide directed towards the middle region of human NPY1R. Synthetic peptide located within the following region: TDEPFQNVTLDAYKDKYVCFDQFPSDSHRLSYTLLLVLQYFGPLCFIF
Formulation:	Liquid. Purified antibody supplied in 1x PBS buffer with 0.09% (w/v) sodium azide and 2% sucrose. <i>Note that this product is shipped as lyophilized powder to China customers.</i>
Purification:	Affinity Purified
Conjugation:	Unconjugated
Storage:	Store at -20°C as received.
Stability:	Stable for 12 months from date of receipt.
Predicted Protein Size:	44 kDa
Gene Name:	neuropeptide Y receptor Y1
Database Link:	NP_000900 Entrez Gene 18166 Mouse Entrez Gene 4886 Human P25929



[View online »](#)

Background:

Neuropeptide Y (NPY) is one of the most abundant neuropeptides in the mammalian nervous system and exhibits a diverse range of important physiologic activities, including effects on psychomotor activity, food intake, regulation of central endocrine secretion, and potent vasoactive effects on the cardiovascular system. Two major subtypes of NPY (Y1 and Y2) have been defined by pharmacologic criteria. NPY receptors, such as NPY1R, have been identified in a variety of tissues, including brain, spleen, small intestine, kidney, testis, placenta, and aortic smooth muscle. Neuropeptide Y (NPY; MIM 162640) is one of the most abundant neuropeptides in the mammalian nervous system and exhibits a diverse range of important physiologic activities, including effects on psychomotor activity, food intake, regulation of central endocrine secretion, and potent vasoactive effects on the cardiovascular system. Two major subtypes of NPY (Y1 and Y2) have been defined by pharmacologic criteria. NPY receptors, such as NPY1R, have been identified in a variety of tissues, including brain, spleen, small intestine, kidney, testis, placenta, and aortic smooth muscle (Herzog et al., 1992 [PubMed 1321422]). [supplied by OMIM]. Publication Note: This RefSeq record includes a subset of the publications that are available for this gene. Please see the Entrez Gene record to access additional publications.

Synonyms:

NPY1-R; NPYR

Note:

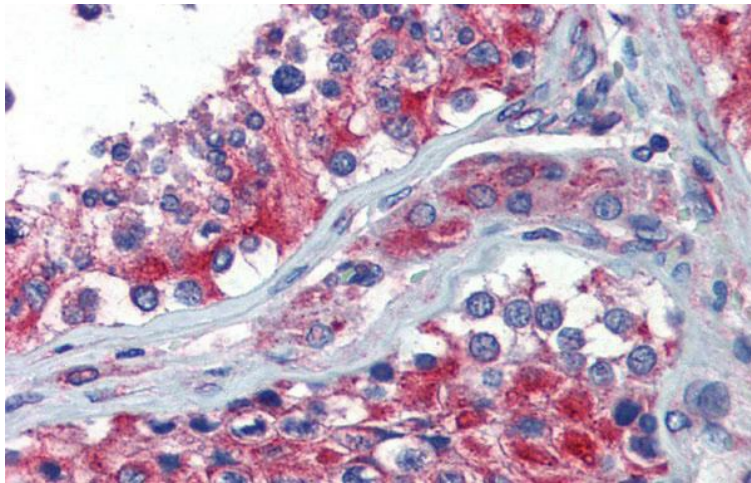
Immunogen Sequence Homology: Human: 100%; Dog: 93%; Pig: 93%; Rat: 93%; Sheep: 93%; Bovine: 93%; Rabbit: 93%; Guinea pig: 93%; Horse: 79%; Mouse: 79%

Protein Families:

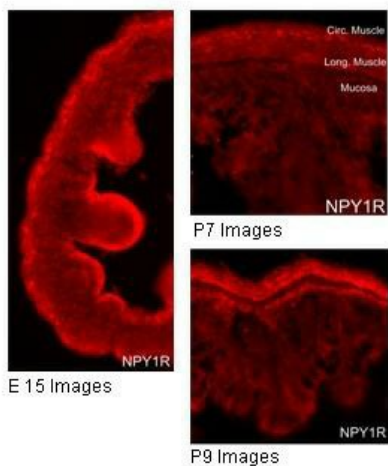
Druggable Genome, GPCR, Transmembrane

Protein Pathways:

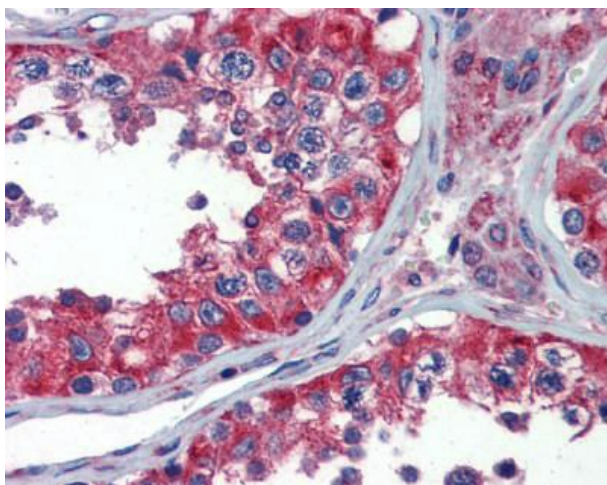
Neuroactive ligand-receptor interaction

Product images:

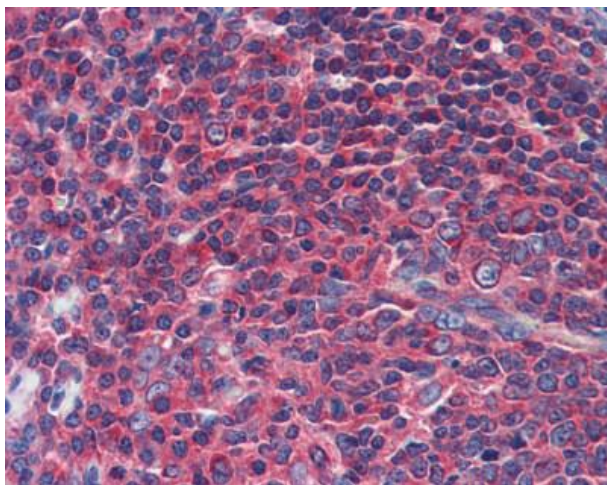
Immunohistochemistry with Human Testis lysate tissue at an antibody concentration of 5.0 ug/ml using anti-NPY1R antibody



Immunohistochemistry with gut tissue



Immunohistochemistry with gut tissue



Immunohistochemistry with gut tissue