

Product datasheet for **TA346234**

Neuropeptide Y (NPY) Rabbit Polyclonal Antibody

Product data:

Product Type:	Primary Antibodies
Applications:	WB
Recommended Dilution:	WB
Reactivity:	Human
Host:	Rabbit
Isotype:	IgG
Clonality:	Polyclonal
Immunogen:	The immunogen for Anti-NPY antibody is: synthetic peptide directed towards the middle region of Human NPY. Synthetic peptide located within the following region: CLGALAEAYPSKPDNPGEDAPAEDMARYYSALRHYINLITRQRYGKRSSP
Formulation:	Liquid. Purified antibody supplied in 1x PBS buffer with 0.09% (w/v) sodium azide and 2% sucrose. <i>Note that this product is shipped as lyophilized powder to China customers.</i>
Purification:	Affinity Purified
Conjugation:	Unconjugated
Storage:	Store at -20°C as received.
Stability:	Stable for 12 months from date of receipt.
Predicted Protein Size:	10 kDa
Gene Name:	neuropeptide Y
Database Link:	NP_000896 Entrez Gene 4852 Human P01303
Background:	NPY is implicated in the control of feeding and in secretion of gonadotrophin-release hormone.
Synonyms:	PYY4
Note:	Immunogen Sequence Homology: Dog: 100%; Pig: 100%; Rat: 100%; Horse: 100%; Human: 100%; Mouse: 100%; Bovine: 100%; Rabbit: 100%; Guinea pig: 100%; Sheep: 93%; Zebrafish: 93%

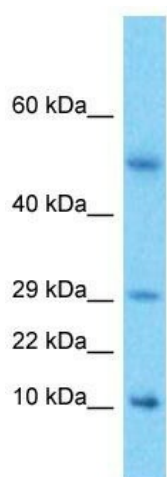


[View online »](#)

Protein Families: Druggable Genome, Secreted Protein, Transmembrane

Protein Pathways: Adipocytokine signaling pathway

Product images:



Host: Rabbit

Target Name: NPY

Sample Tissue: Esophagus Tumor Lysate

Antibody Dilution: 1.0 μ g/ml

Host: Rabbit; Target Name: NPY; Sample Tissue: Esophagus Tumor lysates; Antibody Dilution: 1.0 ug/ml