

Product datasheet for **TA346233**

CYP4F3 Rabbit Polyclonal Antibody

Product data:

Product Type:	Primary Antibodies
Applications:	IHC, WB
Recommended Dilution:	WB, IHC
Reactivity:	Human
Host:	Rabbit
Isotype:	IgG
Clonality:	Polyclonal
Immunogen:	The immunogen for anti-CYP4F3 antibody: synthetic peptide directed towards the N terminal of human CYP4F3. Synthetic peptide located within the following region: LAWTYTFYDNCCLRCFPQPPKRNWFLGHLGLIHSSEGLLYTQSLACTF
Formulation:	Liquid. Purified antibody supplied in 1x PBS buffer with 0.09% (w/v) sodium azide and 2% sucrose.
Purification:	Affinity Purified
Conjugation:	Unconjugated
Storage:	Store at -20°C as received.
Stability:	Stable for 12 months from date of receipt.
Predicted Protein Size:	60 kDa
Gene Name:	cytochrome P450 family 4 subfamily F member 3
Database Link:	NP_000887 Entrez Gene 4051 Human Q08477



[View online »](#)

Background:

This gene, CYP4F3, encodes a member of the cytochrome P450 superfamily of enzymes. The cytochrome P450 proteins are monooxygenases which catalyze many reactions involved in drug metabolism and synthesis of cholesterol, steroids and other lipids. This protein localizes to the endoplasmic reticulum. The enzyme starts the process of inactivating and degrading leukotriene B4, a potent mediator of inflammation. This gene is part of a cluster of cytochrome P450 genes on chromosome 19. Another member of this family, CYP4F8, is approximately 18 kb away. Three transcript variants encoding two different isoforms have been found for this gene. [provided by RefSeq, Nov 2010]

Synonyms:

CPF3; CYP4F; LTB4H

Note:

Immunogen Sequence Homology: Human: 100%; Dog: 86%; Rat: 85%; Mouse: 85%

Protein Families:

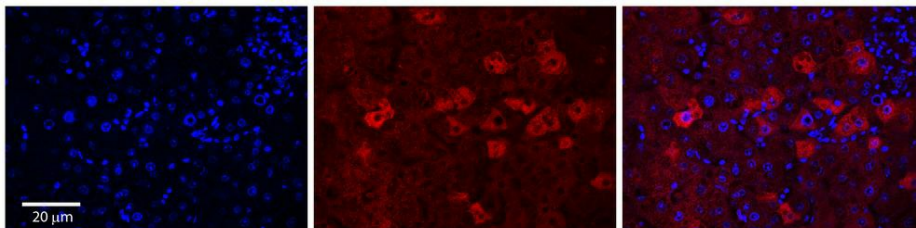
Druggable Genome, P450, Transmembrane

Protein Pathways:

Arachidonic acid metabolism, Metabolic pathways

Product images:


WB Suggested Anti-CYP4F3 Antibody Titration: 0.2-1 ug/ml; ELISA Titer: 1: 312500; Positive Control: OVCAR-3 cell lysate CYP4F3 is supported by BioGPS gene expression data to be expressed in OVCAR3



Rabbit Anti-CYP4F3 Antibody; Formalin Fixed Paraffin Embedded Tissue: Human Adult Liver; Observed Staining: Cytoplasm in hepatocytes, strong signal, moderate tissue distribution; Primary Antibody Concentration: 1: 100; Secondary Antibody: Donkey anti-Rabbit-Cy3; Secondary Antibody Concentration: 1: 200; Magnification: 20X; Exposure Time: 0.5-2.0 sec; Protocol located in Reviews and Data.