

Product datasheet for **TA346230**

GHRHR Rabbit Polyclonal Antibody

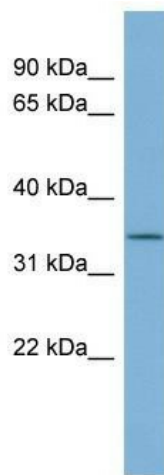
Product data:

Product Type:	Primary Antibodies
Applications:	WB
Recommended Dilution:	WB
Reactivity:	Human
Host:	Rabbit
Isotype:	IgG
Clonality:	Polyclonal
Immunogen:	The immunogen for anti-GHRHR antibody: synthetic peptide directed towards the middle region of human GHRHR. Synthetic peptide located within the following region: PYPVACPVPLELLAAEESYFSTVKIITYTVGHSISIVALFVAITILVALRR
Formulation:	Liquid. Purified antibody supplied in 1x PBS buffer with 0.09% (w/v) sodium azide and 2% sucrose. <i>Note that this product is shipped as lyophilized powder to China customers.</i>
Purification:	Affinity Purified
Conjugation:	Unconjugated
Storage:	Store at -20°C as received.
Stability:	Stable for 12 months from date of receipt.
Predicted Protein Size:	37 kDa
Gene Name:	growth hormone releasing hormone receptor
Database Link:	NP_001009824 Entrez Gene 2692 Human Q02643



[View online »](#)

Background:	GHRHR is a receptor for growth hormone-releasing hormone. Binding of this hormone to the receptor leads to synthesis and release of growth hormone. Mutations in its gene have been associated with isolated growth hormone deficiency (IGHD), also known as Dwarfism of Sindh, a disorder characterized by short stature. This gene, expressed in the pituitary, encodes a receptor for growth hormone-releasing hormone. Binding of this hormone to the receptor leads to synthesis and release of growth hormone. Mutations in this gene have been associated with isolated growth hormone deficiency (IGHD), also known as Dwarfism of Sindh, a disorder characterized by short stature. Many alternate transcriptional splice variants encoding different isoforms have been described, but only two have been characterized to date.
Synonyms:	GHRFR; GHRHRpsv; GRFR; IGHD1B
Note:	Immunogen Sequence Homology: Human: 100%; Rat: 93%; Rabbit: 93%; Dog: 86%; Horse: 86%; Mouse: 79%; Pig: 77%; Sheep: 77%; Bovine: 77%
Protein Families:	Druggable Genome, GPCR, Transmembrane
Protein Pathways:	Neuroactive ligand-receptor interaction

Product images:

WB Suggested Anti-GHRHR Antibody Titration:
0.2-1 ug/ml; ELISA Titer: 1: 312500; Positive
Control: PANC1 cell lysate GHRHR is strongly
supported by BioGPS gene expression data to be
expressed in Human PANC1 cells