

Product datasheet for **TA346228**

CYP4B1 Rabbit Polyclonal Antibody

Product data:

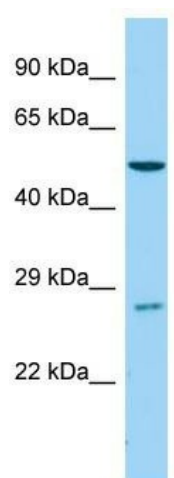
Product Type:	Primary Antibodies
Applications:	WB
Recommended Dilution:	WB
Reactivity:	Mouse
Host:	Rabbit
Isotype:	IgG
Clonality:	Polyclonal
Immunogen:	The immunogen for Anti-Cyp4b1 antibody is: synthetic peptide directed towards the C-terminal region of Mouse Cyp4b1. Synthetic peptide located within the following region: FRLYPPVPQVYRQLSKPVTTFVDGRSLPAGSLISLHIYALHRNSAVWPDPE
Formulation:	Liquid. Purified antibody supplied in 1x PBS buffer with 0.09% (w/v) sodium azide and 2% sucrose. <i>Note that this product is shipped as lyophilized powder to China customers.</i>
Purification:	Affinity Purified
Conjugation:	Unconjugated
Storage:	Store at -20°C as received.
Stability:	Stable for 12 months from date of receipt.
Predicted Protein Size:	59 kDa
Gene Name:	cytochrome P450 family 4 subfamily B member 1
Database Link:	NP_000770 Entrez Gene 13120 Mouse P13584
Background:	Cyp4b1 is responsible for mutagenic activation of 3-methoxy-4-aminoazobenzene (3-MeO-AAB); a potent procarcinogen. Cyp4b1 is also active on 2-aminofluorene and 2-aminoanthracene.
Synonyms:	CYPIVB1; P-450HP
Note:	Immunogen Sequence Homology: Human: 100%; Mouse: 100%; Dog: 93%; Pig: 93%; Rat: 93%; Goat: 93%; Horse: 93%; Rabbit: 93%; Guinea pig: 93%; Bovine: 86%



[View online »](#)

Protein Families: Druggable Genome, P450, Transmembrane

Product images:



Host: Rabbit; Target Name: Cyp4b1; Sample
Tissue: Mouse Testis lysates; Antibody Dilution:
1.0 ug/ml