

Product datasheet for **TA346227**

CYP4B1 Rabbit Polyclonal Antibody

Product data:

| | |
|-------------------------|---|
| Product Type: | Primary Antibodies |
| Applications: | WB |
| Recommended Dilution: | WB |
| Reactivity: | Human |
| Host: | Rabbit |
| Isotype: | IgG |
| Clonality: | Polyclonal |
| Immunogen: | The immunogen for anti-CYP4B1 antibody: synthetic peptide directed towards the N terminal of human CYP4B1. Synthetic peptide located within the following region: SWAHQFPYAHPLWFGQFIGFLNIYEPDYAKAVYSRGDPKAPDVYDFFLQW |
| Formulation: | Liquid. Purified antibody supplied in 1x PBS buffer with 0.09% (w/v) sodium azide and 2% sucrose. <i>Note that this product is shipped as lyophilized powder to China customers.</i> |
| Purification: | Affinity Purified |
| Conjugation: | Unconjugated |
| Storage: | Store at -20°C as received. |
| Stability: | Stable for 12 months from date of receipt. |
| Predicted Protein Size: | 59 kDa |
| Gene Name: | cytochrome P450 family 4 subfamily B member 1 |
| Database Link: | NP_000770 Entrez Gene 1580 Human P13584 |



[View online »](#)

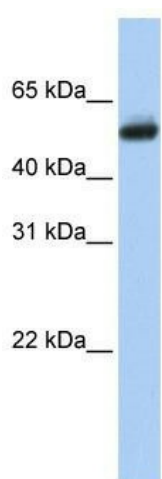
Background: CYP4B1 is a member of the cytochrome P450 superfamily of enzymes. The cytochrome P450 proteins are monooxygenases which catalyze many reactions involved in drug metabolism and synthesis of cholesterol, steroids and other lipids. This protein localizes to the endoplasmic reticulum. In rodents, the homologous protein has been shown to metabolize certain carcinogens; however, the specific function of the human protein has not been determined. This gene encodes a member of the cytochrome P450 superfamily of enzymes. The cytochrome P450 proteins are monooxygenases which catalyze many reactions involved in drug metabolism and synthesis of cholesterol, steroids and other lipids. This protein localizes to the endoplasmic reticulum. In rodents, the homologous protein has been shown to metabolize certain carcinogens; however, the specific function of the human protein has not been determined. Two transcript variants encoding slightly different isoforms have been found for this gene.

Synonyms: CYP4B1; P-450HP

Note: Immunogen Sequence Homology: Dog: 100%; Pig: 100%; Rat: 100%; Horse: 100%; Human: 100%; Mouse: 100%; Bovine: 100%; Rabbit: 100%; Guinea pig: 100%; Goat: 93%

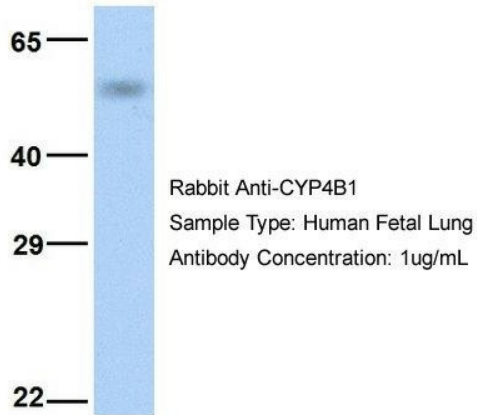
Protein Families: Druggable Genome, P450, Transmembrane

Product images:



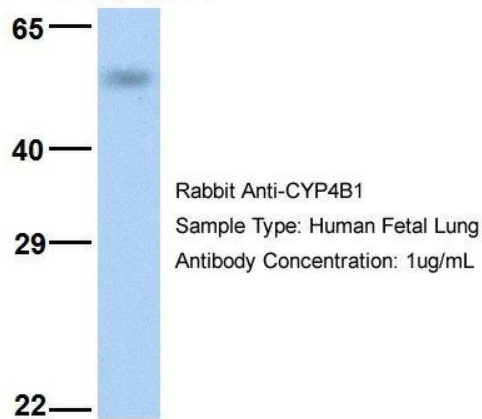
WB Suggested Anti-CYP4B1 Antibody Titration:
0.2-1 ug/ml; ELISA Titer: 1: 312500; Positive
Control: Human brain

CYP4B1



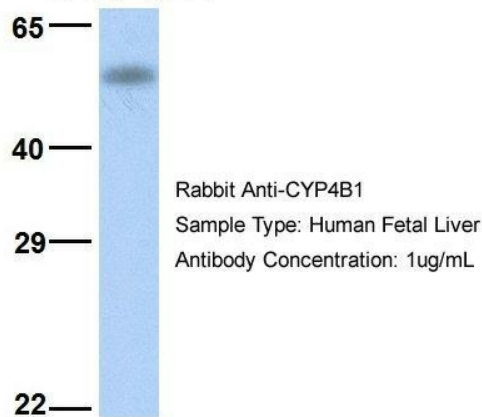
Host: Rabbit; Target Name: CYP4B1; Sample Tissue: Human Fetal Lung; Antibody Dilution: 1.0 ug/ml

CYP4B1



Host: Rabbit; Target Name: CYP4B1; Sample Tissue: Human Fetal Lung; Antibody Dilution: 1.0 ug/ml

CYP4B1



Host: Rabbit; Target Name: CYP4B1; Sample Tissue: Human Fetal Liver; Antibody Dilution: 1.0 ug/ml