

Product datasheet for **TA346226**

CYP2C18 Rabbit Polyclonal Antibody

Product data:

Product Type:	Primary Antibodies
Applications:	WB
Recommended Dilution:	WB
Reactivity:	Human
Host:	Rabbit
Isotype:	IgG
Clonality:	Polyclonal
Immunogen:	The immunogen for anti-CYP2C18 antibody: synthetic peptide directed towards the N terminal of human CYP2C18. Synthetic peptide located within the following region: MDPAAVLVLCLSCLFLLSLWRQSSGRGLPSGPTPLPIIGNILQLDVKDM
Formulation:	Liquid. Purified antibody supplied in 1x PBS buffer with 0.09% (w/v) sodium azide and 2% sucrose. <i>Note that this product is shipped as lyophilized powder to China customers.</i>
Purification:	Affinity Purified
Conjugation:	Unconjugated
Storage:	Store at -20°C as received.
Stability:	Stable for 12 months from date of receipt.
Predicted Protein Size:	56 kDa
Gene Name:	cytochrome P450 family 2 subfamily C member 18
Database Link:	NP_000763 Entrez Gene 1562 Human P33260



[View online »](#)

Background:

This gene encodes a member of the cytochrome P450 superfamily of enzymes. The cytochrome P450 proteins are monooxygenases which catalyze many reactions involved in drug metabolism and synthesis of cholesterol, steroids and other lipids. This protein localizes to the endoplasmic reticulum but its specific substrate has not yet been determined. The gene is located within a cluster of cytochrome P450 genes on chromosome 10q24. An additional gene, CYP2C17, was once thought to exist; however, CYP2C17 is now considered an artefact based on a chimera of CYP2C18 and CYP2C19. Alternatively spliced transcript variants encoding different isoforms have been found for this gene. [provided by RefSeq, Jul 2008]

Synonyms:

29C; CPCI; CYP2C; CYP2C17; P450-6B; P450IIC17

Note:

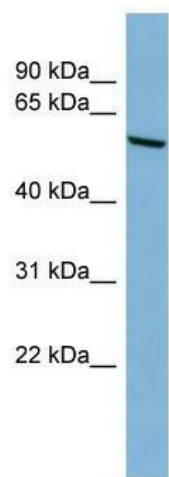
Immunogen Sequence Homology: Human: 100%; Rat: 93%; Mouse: 86%; Pig: 85%; Horse: 83%; Rabbit: 83%; Sheep: 79%; Bovine: 79%; Guinea pig: 79%

Protein Families:

Druggable Genome, P450

Protein Pathways:

Arachidonic acid metabolism, Drug metabolism - cytochrome P450, Linoleic acid metabolism, Metabolic pathways, Metabolism of xenobiotics by cytochrome P450, Retinol metabolism

Product images:

WB Suggested Anti-CYP2C18 Antibody Titration:
0.2-1 ug/ml; ELISA Titer: 1: 1562500; Positive
Control: HT1080 cell lysate