

## Product datasheet for **TA346225**

### Cytochrome P450 2C9 (CYP2C9) Rabbit Polyclonal Antibody

#### Product data:

Product Type:	Primary Antibodies
Applications:	WB
Recommended Dilution:	WB
Reactivity:	Human
Host:	Rabbit
Isotype:	IgG
Clonality:	Polyclonal
Immunogen:	The immunogen for anti-CYP2C9 antibody: synthetic peptide directed towards the C terminal of human CYP2C9. Synthetic peptide located within the following region: AGMELFLFLTSILQNFNLKSLVDPKNLDTTPVVNGFASVPPFYQLCFIPV
Formulation:	Liquid. Purified antibody supplied in 1x PBS buffer with 0.09% (w/v) sodium azide and 2% sucrose. <i>Note that this product is shipped as lyophilized powder to China customers.</i>
Purification:	Affinity Purified
Conjugation:	Unconjugated
Storage:	Store at -20°C as received.
Stability:	Stable for 12 months from date of receipt.
Predicted Protein Size:	55 kDa
Gene Name:	cytochrome P450 family 2 subfamily C member 9
Database Link:	<a href="#">NP_000762</a> <a href="#">Entrez Gene 1559 Human P11712</a>



[View online »](#)

**Background:**

CYP2C9 is a member of the cytochrome P450 superfamily of enzymes. The cytochrome P450 proteins are monooxygenases which catalyze many reactions involved in drug metabolism and synthesis of cholesterol, steroids and other lipids. This protein localizes to the endoplasmic reticulum and its expression is induced by rifampin. The enzyme is known to metabolize many xenobiotics, including phenytoin, tolbutamide, ibuprofen and S-warfarin. Studies identifying individuals who are poor metabolizers of phenytoin and tolbutamide suggest that CYP2C9 gene is polymorphic. This gene encodes a member of the cytochrome P450 superfamily of enzymes. The cytochrome P450 proteins are monooxygenases which catalyze many reactions involved in drug metabolism and synthesis of cholesterol, steroids and other lipids. This protein localizes to the endoplasmic reticulum and its expression is induced by rifampin. The enzyme is known to metabolize many xenobiotics, including phenytoin, tolbutamide, ibuprofen and S-warfarin. Studies identifying individuals who are poor metabolizers of phenytoin and tolbutamide suggest that this gene is polymorphic. The gene is located within a cluster of cytochrome P450 genes on chromosome 10q24. Publication Note: This RefSeq record includes a subset of the publications that are available for this gene. Please see the Entrez Gene record to access additional publications.

**Synonyms:**

CPC9; CYP2C; CYP2C10; CYPIIC9; P450IIC9

**Note:**

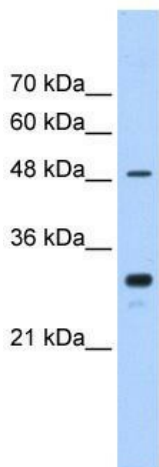
Immunogen Sequence Homology: Human: 100%; Bovine: 85%; Dog: 83%; Pig: 83%; Rat: 83%; Horse: 83%; Mouse: 83%; Sheep: 83%; Rabbit: 77%; Guinea pig: 75%

**Protein Families:**

Druggable Genome, P450

**Protein Pathways:**

Arachidonic acid metabolism, Drug metabolism - cytochrome P450, Linoleic acid metabolism, Metabolic pathways, Metabolism of xenobiotics by cytochrome P450, Retinol metabolism

**Product images:**

WB Suggested Anti-CYP2C9 Antibody Titration: 0.2-1 ug/ml; Positive Control: Jurkat cell lysate  
There is BioGPS gene expression data showing that CYP2C9 is expressed in Jurkat