

Product datasheet for **TA346223**

Cytochrome P450 2B6 (CYP2B6) Rabbit Polyclonal Antibody

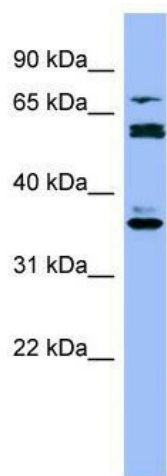
Product data:

Product Type:	Primary Antibodies
Applications:	WB
Recommended Dilution:	WB
Reactivity:	Human, Mouse
Host:	Rabbit
Isotype:	IgG
Clonality:	Polyclonal
Immunogen:	The immunogen for anti-CYP2B6 antibody: synthetic peptide directed towards the middle region of human CYP2B6. Synthetic peptide located within the following region: QLFELFSGFLKYFPGAHRQVYKNLQEINAYIGHSVEKHRETLDPSAPKDL
Formulation:	Liquid. Purified antibody supplied in 1x PBS buffer with 0.09% (w/v) sodium azide and 2% sucrose. <i>Note that this product is shipped as lyophilized powder to China customers.</i>
Purification:	Affinity Purified
Conjugation:	Unconjugated
Storage:	Store at -20°C as received.
Stability:	Stable for 12 months from date of receipt.
Predicted Protein Size:	56 kDa
Gene Name:	cytochrome P450 family 2 subfamily B member 6
Database Link:	NP_000758 Entrez Gene 1555 Human P20813



[View online »](#)

Background:	This gene, CYP2B6, encodes a member of the cytochrome P450 superfamily of enzymes. The cytochrome P450 proteins are monooxygenases which catalyze many reactions involved in drug metabolism and synthesis of cholesterol, steroids and other lipids. This protein localizes to the endoplasmic reticulum and its expression is induced by phenobarbital. The enzyme is known to metabolize some xenobiotics, such as the anti-cancer drugs cyclophosphamide and ifosphamide. Transcript variants for this gene have been described; however, it has not been resolved whether these transcripts are in fact produced by this gene or by a closely related pseudogene, CYP2B7. Both the gene and the pseudogene are located in the middle of a CYP2A pseudogene found in a large cluster of cytochrome P450 genes from the CYP2A, CYP2B and CYP2F subfamilies on chromosome 19q. [provided by RefSeq, Jul 2008]
Synonyms:	CPB6; CYP2B; CYP2B7; CYP2B7P; CYP11B6; EFVM; IIB1; P450
Note:	Immunogen Sequence Homology: Human: 100%; Rat: 93%; Mouse: 93%; Dog: 92%; Pig: 82%; Guinea pig: 82%; Horse: 79%; Bovine: 79%; Rabbit: 79%
Protein Families:	Druggable Genome, P450
Protein Pathways:	Arachidonic acid metabolism, Drug metabolism - cytochrome P450, Metabolic pathways, Metabolism of xenobiotics by cytochrome P450, Retinol metabolism

Product images:

WB Suggested Anti-CYP2B6 Antibody Titration:
0.2-1 ug/ml; ELISA Titer: 1: 312500; Positive
Control: THP-1 cell lysate