

Product datasheet for TA346222

CYP2A7 Rabbit Polyclonal Antibody

Product data:

Product Type:	Primary Antibodies
Applications:	WB
Recommended Dilution:	WB
Reactivity:	Human
Host:	Rabbit
Isotype:	IgG
Clonality:	Polyclonal
Immunogen:	The immunogen for Anti-CYP2A7 antibody is: synthetic peptide directed towards the C-terminal region of Human CYP2A7. Synthetic peptide located within the following region: EGLARMEFLFFTTVMQNFR LKSSQSPKDIDVSPKHVV FAFATIPRNYTMSF
Formulation:	Liquid. Purified antibody supplied in 1x PBS buffer with 0.09% (w/v) sodium azide and 2% sucrose. <i>Note that this product is shipped as lyophilized powder to China customers.</i>
Purification:	Affinity Purified
Conjugation:	Unconjugated
Storage:	Store at -20°C as received.
Stability:	Stable for 12 months from date of receipt.
Predicted Protein Size:	48 kDa
Gene Name:	cytochrome P450 family 2 subfamily A member 7
Database Link:	NP_085079 Entrez Gene 1549 Human P20853
Background:	This gene encodes a member of the cytochrome P450 superfamily of enzymes. The cytochrome P450 proteins are monooxygenases which catalyze many reactions involved in drug metabolism and synthesis of cholesterol, steroids and other lipids. This protein localizes to the endoplasmic reticulum; its substrate has not yet been determined. This gene, which produces two transcript variants, is part of a large cluster of cytochrome P450 genes from the CYP2A, CYP2B and CYP2F subfamilies on chromosome 19q.



[View online »](#)

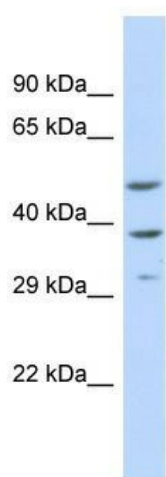
Synonyms: CPA7; CPAD; CYP2A; CYP11A7; P450-IIA4

Note: Immunogen Sequence Homology: Human: 100%; Sheep: 93%; Bovine: 93%; Pig: 86%; Rat: 86%; Horse: 86%; Guinea pig: 86%; Dog: 79%

Protein Families: Druggable Genome, P450, Transmembrane

Protein Pathways: Caffeine metabolism, Drug metabolism - cytochrome P450, Drug metabolism - other enzymes, Metabolic pathways, Retinol metabolism

Product images:



Host: Rabbit; Target Name: CYP2A7; Sample Tissue: HeLa Whole cell lysates; Antibody Dilution: 1.0 ug/ml