

Product datasheet for **TA346215**

ADH7 Rabbit Polyclonal Antibody

Product data:

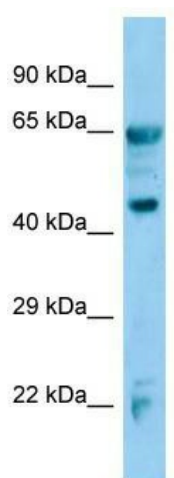
Product Type:	Primary Antibodies
Applications:	WB
Recommended Dilution:	WB
Reactivity:	Mouse
Host:	Rabbit
Isotype:	IgG
Clonality:	Polyclonal
Immunogen:	The immunogen for Anti-Adh7 antibody is: synthetic peptide directed towards the C-terminal region of Mouse Adh7. Synthetic peptide located within the following region: LYDPMLLFTGRTWKGCVFGGWKSRDDVPKLVTEFLEKKFDLDQLITHTL
Formulation:	Liquid. Purified antibody supplied in 1x PBS buffer with 0.09% (w/v) sodium azide and 2% sucrose. <i>Note that this product is shipped as lyophilized powder to China customers.</i>
Purification:	Affinity Purified
Conjugation:	Unconjugated
Storage:	Store at -20°C as received.
Stability:	Stable for 12 months from date of receipt.
Predicted Protein Size:	40 kDa
Gene Name:	alcohol dehydrogenase 7 (class IV), mu or sigma polypeptide
Database Link:	NP_001159976 Entrez Gene 11529 Mouse P40394
Background:	Adh7 could function in retinol oxidation for the synthesis of retinoic acid, a hormone important for cellular differentiation.
Synonyms:	ADH4
Note:	Immunogen Sequence Homology: Rat: 100%; Human: 100%; Mouse: 100%; Pig: 93%
Protein Families:	Druggable Genome



[View online »](#)

Protein Pathways: Drug metabolism - cytochrome P450, Fatty acid metabolism, Glycolysis / Gluconeogenesis, Metabolic pathways, Metabolism of xenobiotics by cytochrome P450, Retinol metabolism, Tyrosine metabolism

Product images:



Host: Rabbit; Target Name: Adh7; Sample Tissue: Mouse Lung lysates; Antibody Dilution: 1.0 ug/ml