

## Product datasheet for **TA346214**

### ADH6 Rabbit Polyclonal Antibody

#### Product data:

Product Type:	Primary Antibodies
Applications:	WB
Recommended Dilution:	WB
Reactivity:	Human
Host:	Rabbit
Isotype:	IgG
Clonality:	Polyclonal
Immunogen:	The immunogen for anti-ADH6 antibody: synthetic peptide directed towards the middle region of human ADH6. Synthetic peptide located within the following region: AGAARIIGVDVNKEKFKKAQELGATECLNPQDLKKPIQEVLFDMTDAGID
Formulation:	Liquid. Purified antibody supplied in 1x PBS buffer with 0.09% (w/v) sodium azide and 2% sucrose. <i>Note that this product is shipped as lyophilized powder to China customers.</i>
Purification:	Affinity Purified
Conjugation:	Unconjugated
Storage:	Store at -20°C as received.
Stability:	Stable for 12 months from date of receipt.
Predicted Protein Size:	32 kDa
Gene Name:	alcohol dehydrogenase 6 (class V)
Database Link:	<a href="#">NP_000663</a> <a href="#">Entrez Gene 130 Human</a> <a href="#">P28332</a>
Background:	ADH6 is class V alcohol dehydrogenase, which is a member of the alcohol dehydrogenase family. Members of this family metabolize a wide variety of substrates, including ethanol, retinol, other aliphatic alcohols, hydroxysteroids, and lipid peroxidation products.
Synonyms:	ADH-5
Note:	Immunogen Sequence Homology: Human: 100%; Horse: 86%; Bovine: 86%; Rabbit: 86%; Dog: 79%; Pig: 79%; Rat: 79%; Mouse: 79%; Guinea pig: 79%

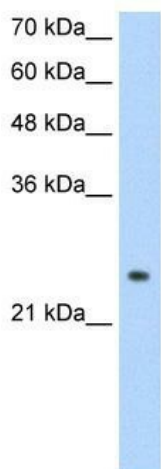


[View online »](#)

**Protein Families:** Druggable Genome

**Protein Pathways:** Drug metabolism - cytochrome P450, Fatty acid metabolism, Glycolysis / Gluconeogenesis, Metabolic pathways, Metabolism of xenobiotics by cytochrome P450, Retinol metabolism, Tyrosine metabolism

**Product images:**



WB Suggested Anti-ADH6 Antibody Titration: 1.25 ug/ml; Positive Control: HepG2 cell lysate ADH6 is strongly supported by BioGPS gene expression data to be expressed in Human HepG2 cells