

## Product datasheet for **TA346208**

### C8 (C8G) Rabbit Polyclonal Antibody

#### Product data:

Product Type:	Primary Antibodies
Applications:	WB
Recommended Dilution:	WB
Reactivity:	Human
Host:	Rabbit
Isotype:	IgG
Clonality:	Polyclonal
Immunogen:	The immunogen for Anti-C8G antibody is: synthetic peptide directed towards the N-terminal region of Human C8G. Synthetic peptide located within the following region: VGSACRFLQEQGHRAEATTLHVAPQGTAMAVSTFRKLDGICWQVRQLYGD
Formulation:	Liquid. Purified antibody supplied in 1x PBS buffer with 0.09% (w/v) sodium azide and 2% sucrose.
Purification:	Affinity Purified
Conjugation:	Unconjugated
Storage:	Store at -20°C as received.
Stability:	Stable for 12 months from date of receipt.
Predicted Protein Size:	22 kDa
Gene Name:	complement component 8, gamma polypeptide
Database Link:	<a href="#">NP_000597</a> <a href="#">Entrez Gene 733 Human</a> <a href="#">P07360</a>
Background:	The protein encoded by this gene belongs to the lipocalin family. It is one of the three subunits that constitutes complement component 8 (C8), which is composed of a disulfide-linked C8 alpha-gamma heterodimer and a non-covalently associated C8 beta chain. C8 participates in the formation of the membrane attack complex (MAC) on bacterial cell membranes. While subunits alpha and beta play a role in complement-mediated bacterial killing, the gamma subunit is not required for the bactericidal activity.
Synonyms:	C8C



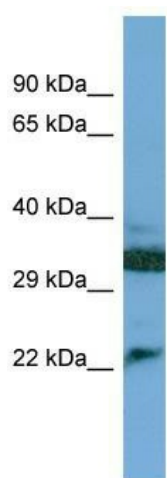
[View online »](#)

**Note:** Immunogen Sequence Homology: Dog: 100%; Pig: 100%; Rat: 100%; Horse: 100%; Human: 100%; Mouse: 100%; Rabbit: 100%; Bovine: 93%; Guinea pig: 85%

**Protein Families:** Druggable Genome, Secreted Protein

**Protein Pathways:** Complement and coagulation cascades, Prion diseases, Systemic lupus erythematosus

**Product images:**



Host: Rabbit; Target Name: C8G; Sample Tissue: Jurkat Whole cell lysates; Antibody Dilution: 1.0 ug/ml