

Product datasheet for **TA346206**

GSTM1 Rabbit Polyclonal Antibody

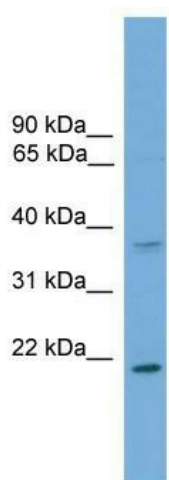
Product data:

Product Type:	Primary Antibodies
Applications:	WB
Recommended Dilution:	WB
Reactivity:	Human
Host:	Rabbit
Isotype:	IgG
Clonality:	Polyclonal
Immunogen:	The immunogen for anti-GSTM1 antibody: synthetic peptide directed towards the C terminal of human GSTM1. Synthetic peptide located within the following region: PEKLKLYSEFLGKRPWFAGNKGLEKISAYMKSSRFLRPVFSKMAVWGNIK
Formulation:	Liquid. Purified antibody supplied in 1x PBS buffer with 0.09% (w/v) sodium azide and 2% sucrose. <i>Note that this product is shipped as lyophilized powder to China customers.</i>
Purification:	Affinity Purified
Conjugation:	Unconjugated
Storage:	Store at -20°C as received.
Stability:	Stable for 12 months from date of receipt.
Predicted Protein Size:	21 kDa
Gene Name:	glutathione S-transferase mu 1
Database Link:	NP_666533 Entrez Gene 2944 Human P09488



[View online »](#)

Background:	Cytosolic and membrane-bound forms of glutathione S-transferase are two distinct supergene families. At present, eight distinct classes of the soluble cytoplasmic mammalian glutathione S-transferases have been identified: alpha, kappa, mu, omega, pi, sigma, theta and zeta. GSTM1 a glutathione S-transferase that belongs to the mu class. The mu class of enzymes functions in the detoxification of electrophilic compounds, including carcinogens, therapeutic drugs, environmental toxins and products of oxidative stress, by conjugation with glutathione.
Synonyms:	GST1; GSTM1-1; GSTM1a-1a; GSTM1b-1b; GTH4; GTM1; H-B; MU; MU-1
Note:	Immunogen Sequence Homology: Rat: 100%; Human: 100%; Mouse: 93%; Bovine: 86%; Rabbit: 86%; Dog: 79%; Pig: 79%
Protein Families:	Druggable Genome
Protein Pathways:	Drug metabolism - cytochrome P450, Glutathione metabolism, Metabolism of xenobiotics by cytochrome P450

Product images:

WB Suggested Anti-GSTM1 Antibody Titration:
0.2-1 ug/ml; ELISA Titer: 1: 312500; Positive
Control: HeLa cell lysate GSTM1 is supported by
BioGPS gene expression data to be expressed in
HeLa